

## Metal ducting

### Excellent performance thanks to optimal ducting and installation.

Intelligently selecting and installing the duct system not only has a very positive effect on the output of the ventilation system; it also minimizes the noise generated. It is therefore decisive for the efficiency of the entire ventilation system.

#### The duct type.

In Gaggenau's accessories catalog, customers can select the type of duct appropriate to their needs, whether aluflex pipe, round duct or a flat duct system. Depending on the duct type, they can choose from the nominal sizes DN 150 and DN 200. For maximum output with minimal noise, the diameter should always be as large as possible. For straight ducting, or metal ducts with smooth, level inner surfaces is recommended. These enable a laminar flow of air during extraction, without air turbulence. For sections that are not straight and for bends, aluflex pipe are preferred because they make it possible to avoid hard edges.

Where space limitations are a concern, the first choice is the Gaggenau flat metal duct system. The remarkable design with special conducting fins in the bends and junction pieces allow for a very low height and large nominal size, thus ensuring very efficient air circulation. This also applies in situations where there are many bends. We strongly discourage the use of other flat ducts due to the high output losses in duct bends, duct corners and junction pieces.

Spiral and corrugated ducts should definitely not be used. In addition to displaying the worst flow conditions, these types also tend to flutter and thus generate noise.

#### The duct diameter.

A good guideline here is: The duct diameter should be as large and constant as possible, while the ducting should be as short and straight as possible. The wall outlet must correspond to the duct diameter.

#### The building regulations.

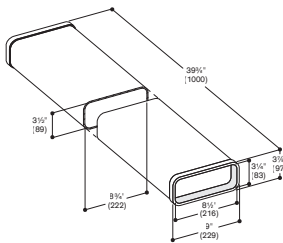
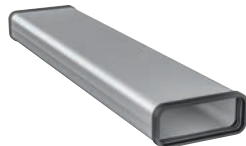
Please observe the local applicable building regulation when configuring ventilation solutions.

The metal ducts are particularly suitable for downdraft and retractable downdraft in countries with increased fire protection requirements.

The metal ducts are non-combustible and suitable for all combinations.

#### AD 854 010

Flat duct.  
Metal.  
DN 150 flat.  
Length 1000 mm.



#### Features

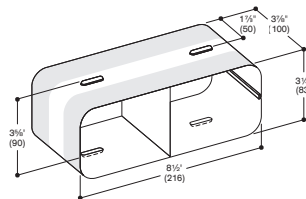
Sealing is pre-assembled on each side.

#### Planning notes

Suitable for flat duct bends.  
To connect 2 flat ducts, a flat duct connecting piece is required.  
If the removal of the seal is necessary, the connection must be fastened and sealed with aluminum adhesive tape.

#### AD 854 040

Flat duct connecting piece.  
Metal.  
DN 150 flat.  
To connect 2 flat ducts.

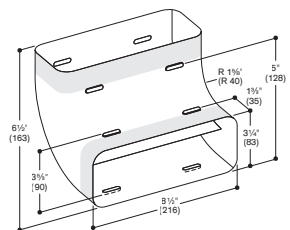


#### Planning notes

Suitable for flat duct and flat duct flex.

#### AD 854 030

Flat duct bend 90° vertical.  
Metal.  
DN 150 flat.



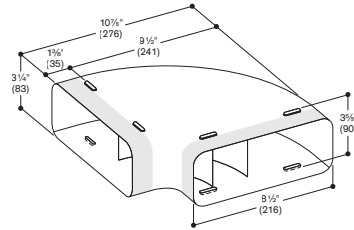
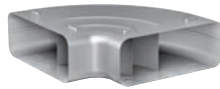
#### Planning notes

Suitable for flat duct and flat duct flex.

## Metal ducting

### AD 854 031

Flat duct bend 90° horizontal.  
Metal.  
DN 150 flat.

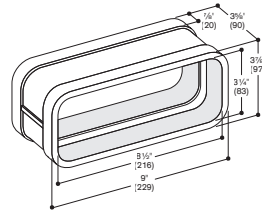


#### Planning notes

Suitable for flat duct and flat duct flex.

### AD 854 000

Flat duct bend connecting piece.  
Metal.  
DN 150 flat.  
To connect 2 flat duct bends.

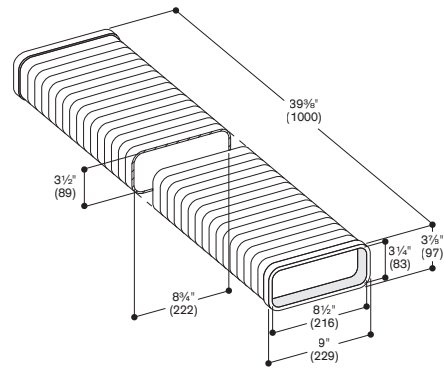
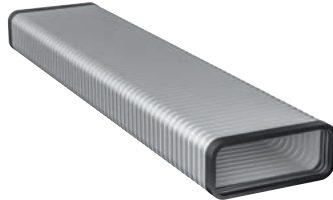


#### Planning notes

If the removal of the seal is necessary, the connection must be fastened and sealed with aluminum adhesive tape.

### AD 858 010

Flat duct flex pipe.  
Metal.  
DN 150 flat.  
Length 1000 mm.

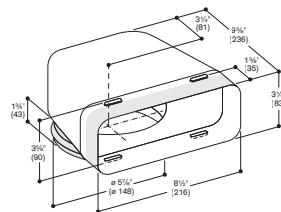


#### Planning notes

Suitable for flat duct bends.  
Flat duct flex pipe can be shortened.  
Useful for bends (<90°) or for parallel offsetting.  
If the removal of the seal is necessary, the connection must be fastened and sealed with aluminum adhesive tape.

### AD 854 032

Flat duct adapter round 90° when connecting to 6" (DN 150) round aluflex pipe AD 751 010.  
Metal.  
DN 150 flat/round.  
Transition from flat duct to round duct.

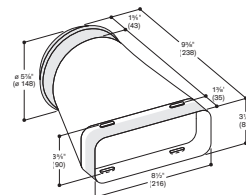


#### Planning notes

Suitable for flat duct and flat duct flex.  
Suitable for round duct and aluflex pipe.

### AD 854 041

Flat duct adapter round.  
Metal.  
DN 150 flat/round.  
Transition from flat duct to round duct.

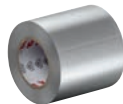


#### Planning notes

Suitable for flat duct and flat duct flex.  
Suitable for round duct and aluflex pipe.

### AD 990 091

Adhesive tape for duct components.  
Aluminum.  
Width 2" (50 mm).  
32.5' (10 m)/roll.

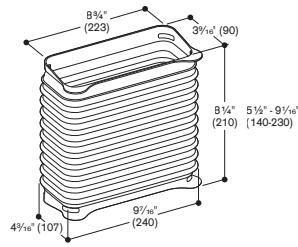


#### Planning notes

Useful for all connections of duct components.

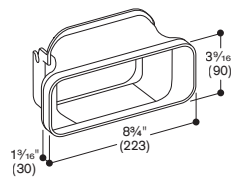
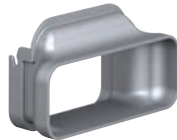
**AD 410 040**

Flexible connecting piece for VL 200 and VL414 downdraft. DN 150 flat.



**AD 851 041**

Connecting piece VL 200 and VL414 for extension with flat duct DN 150 for extra deep countertop.

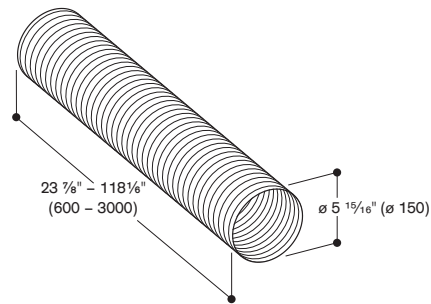


**AD 751 010**

Aluflex pipe. Aluminum. ø 6" (DN 150 round).

**Planning notes**

Recommended only for routing ducting through air paths which are not in a straight line or for round wall and floor apertures. 2 hose clamps enclosed. For combination with all adapters, press the pipe wall flat at the ends. 2 aluflex pipes must be connected with a pipe connection piece for aluflex pipes.



**AD 704 040**

Pipe adapter 8"/6" round. Metal zinc plated. 8" round. Reduce 8" connection to 6" connection.

**Planning notes**

Can be combined with telescopic wall-duct DN 200 and pipe connector DN 150.

