



Oven Gaggenau Expressive series GO 480/GO 481

Right-hinged

GO 480 721

Stainless steel behind smoked glass.
Width 30" (76 cm).

Left-hinged

GO 481 721

Stainless steel behind smoked glass.
Width 30" (76 cm).

Included accessories

- 1 wire rack.
- 1 baking tray, enameled, pyrolysis-safe.
- 1 broil pan, enameled, pyrolysis-safe with wire rack.
- 1 plug-in core temperature probe.
- 1 rotisserie spit.

Optional accessories

BA 020 110

Air frying tray.
To be placed on wire rack.

BA 028 115

Baking tray, enameled.
1" (30 mm) deep.

BA 038 165

Wire rack, chromium-plated.
Without opening, with feet.

BA 058 134

Baking stone.
Incl. baking stone support and baking paddle.
Not in combination with pull-out system.

BS 020 003

Baking paddle.
Serving and cutting board.

GN 340 231

Gastronorm roaster in cast aluminum
GN 2/3, height 6 1/2" (165 mm),
PFAS free non-stick coating.
Lower and upper part can also be
used as separate ovenproof dishes,
3 15/16" (100 mm) and 2 9/16" (65 mm) deep.

Highlights

- Handleless full glass door with electronic door opening.
- Full touch display with stainless steel control ring.
- Light and display response upon user detection.
- Pyrolytic self-cleaning.
- Invisible full surface broiler behind enamel.
- 19 heating methods from 85 °F to 570 °F, incl. baking stone function, roaster function, air frying, dehydrating.
- Automatic programs and setting recommendations.
- Core temperature probe.
- Rotisserie function.
- Oven cavity size 4.3 cu.ft. (125 liters).

Heating methods / Programs

Convection plus.
Economy convection.
Top + bottom heat.
Top + 1/3 bottom heat.
Top heat.
Bottom + 1/3 top heat.
Bottom heat.
Convection + bottom heat.
Convection + 1/3 bottom heat.
Moist baking.
Broil + circulated air.
Broil.
Baking stone function.
Roaster function.
Air frying.
Dehydrating.
Dough proofing.
Keeping warm.
Defrosting.
160 programs
(automatic programs and setting recommendations).
Option to save up to 30 favorites.

Operation

Soft-close side-opening door with 110° opening angle.
Electronic door opening.
Full touch display with control ring.
42 display languages available.
User detection, adjustable distance.
Information key with use indicators.
Animated quick guides to assist appliance operation.

Features

Invisible full surface broiler behind enamel 4,500 W.
Broil can be added briefly for additional browning.
Convection fan rotates in both directions for ideal heat distribution.
Extra powerful bottom heating for baking stone and roaster function.
Three-point core temperature probe with cooking time estimation via Home Connect®.
Rotisserie spit for broiling from all sides.
Precise temperature control with display of the current temperature.
Rapid pre-heating.
Heated catalyser to clean the oven air.
Timer functions: cooking time, cooking time end, count-up timer.
Long-term timer.
Programmable automatic door opening at cooking time end to avoid overcooking.
Optimum visibility of the food thanks to side lighting.
5 rack levels.

Selected digital services

(Gaggenau Home Connect®)

Remote control and monitoring.
Cooking time estimation when using the core temperature probe.
Door opening via voice assistant.

Safety

Child lock to prevent accidental switch on or operation of the appliance.
Electronic door lock to prevent unintentional opening of the appliance door.
Safety shut-off.
Thermally insulated door with quintuple glazing.
Cooled housing with temperature protection.

Cleaning

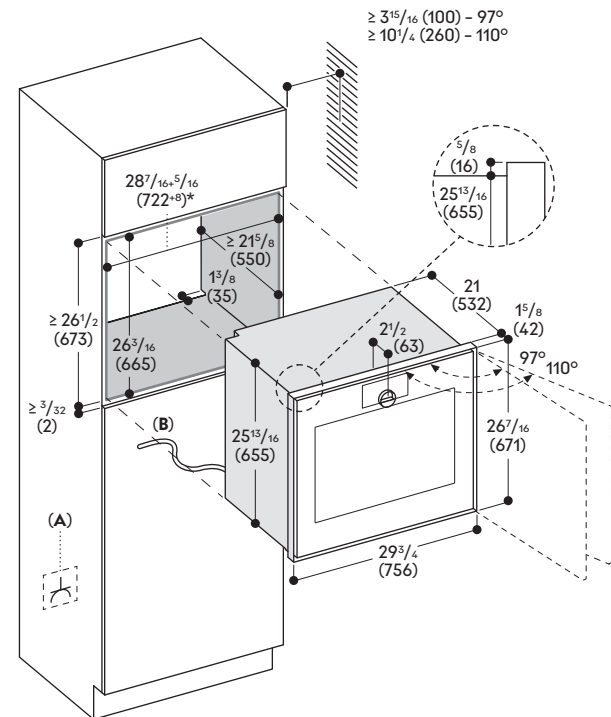
Pyrolysis system with minimized odor development thanks to the heated catalyzer.
Side rack supports enameled and pyrolysis-safe.
Seamless cooking compartment without obstructive elements.

Planning notes

Plan the cutout without back wall.
Door hinge not reversible.
Protrusion from appliance front to cabinet 1 5/8" (42 mm).
Consider the overhang when planning to open drawers next to the appliance.
When planning a corner solution, pay attention to the side-opening door and the minimum required distance to the wall.
Door opening angle appr. 110° (delivery status) can be reduced to appr. 97° if required.
For installation underneath cooktops: distance between the underside of the cooktop and the top edge of the oven cavity: min. 9/16" (15 mm).
The planning notes for the cooktops (particularly regarding ventilation, gas/electric connection) must be taken into account.
The electrical box must be accessible and located outside the built-in cutout.

Rating

Total rating: 4,041 W (208 V);
5,380 W (240 V).
Total amps: 22.4 A.
Minimum fuse protection: 30 A, double-pole breaker.
120/208 – 240 V, 60 Hz, 4-wire.
Plan for a 67" connecting cable (hardwire required).
Home Connect® functionality via WiFi.



A: Accessible electrical connection

B: Fixed cable

* The width tolerance as shown in the drawing indicated by the + 5/16" (+8 mm) is the adjustment possible within the cabinet. Adjustments can be made between 5/8" – 1 15/16" (16-20 mm) for installation using the "centering parts" within the cabinet for perfect alignment. See installation instructions for details.

Numbers indicated
inside parenthesis () = mm

www.gaggenau.com/us
Revised: June 2025

Delivery late Q4, 2025.

Gaggenau reserves the absolute and unrestricted right to change product materials and specifications, at any time, without notice. Consult the product's installation instructions for final dimensional data and other details prior to making cutout. Warranties: Please see Use & Care manual or Gaggenau website for statement of limited product warranty. For more information on our entire line of products, go to www.gaggenau.com or call 1-877-442-4436.