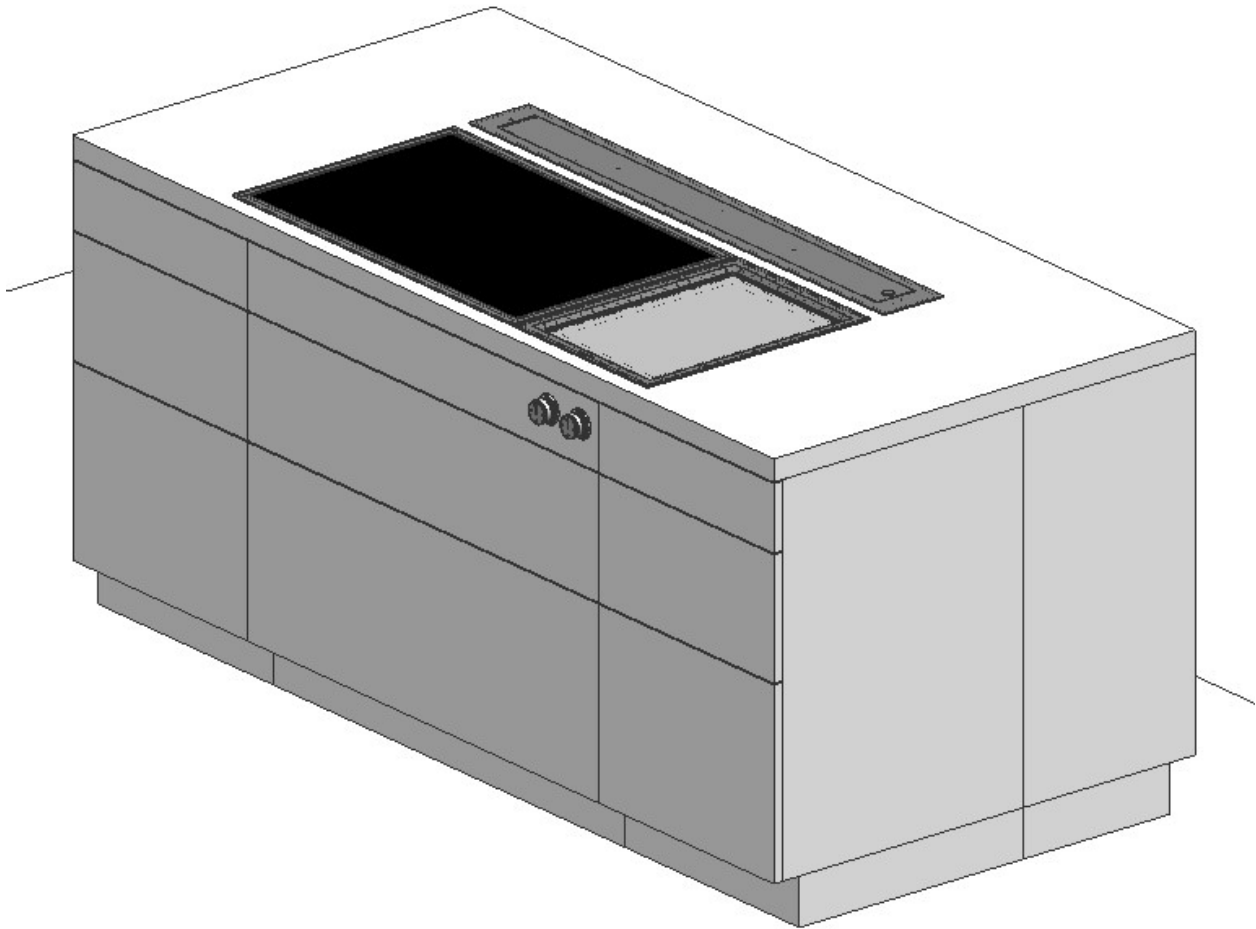


AL400 Island Configuration.

AL400721 46" retractable downdraft + (2) AR410710 recirculating blower

20 December 2019

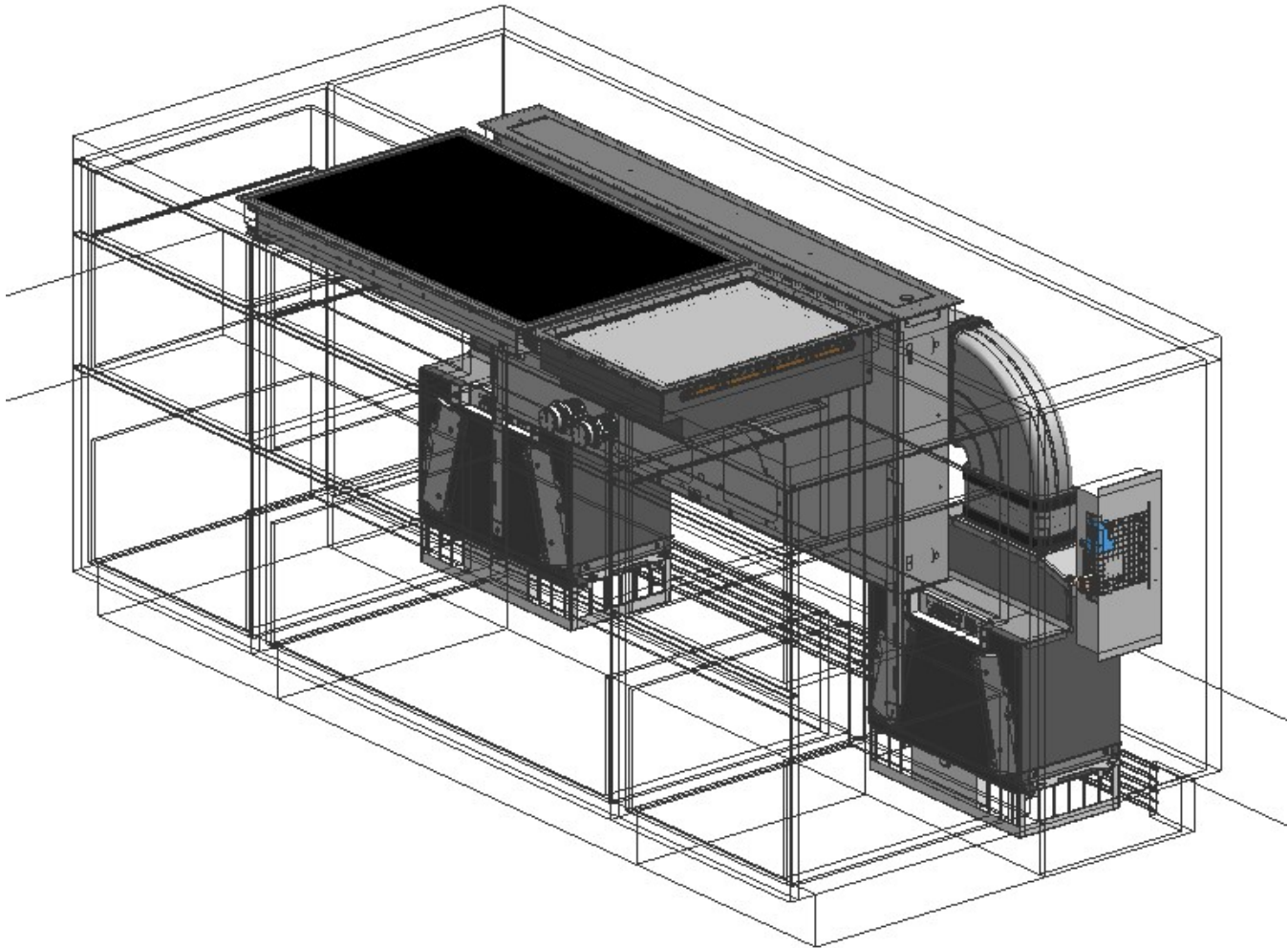
Configuration	AL400721+AR410 710	Min. Work depth		Ventilation mode	Air recirculation
Type reference cooktops	CX 482 + VP 414	Type reference ventilation appliance	AL 400 721	Type reference remote fan unit	AR 410 710



20 December 2019

Configuration	AL400721+AR410 710	Min. Work depth		Ventilation mode	Air recirculation
Type reference cooktops	CX 482 + VP 414	Type reference ventilation appliance	AL 400 721	Type reference remote fan unit	AR 410 710

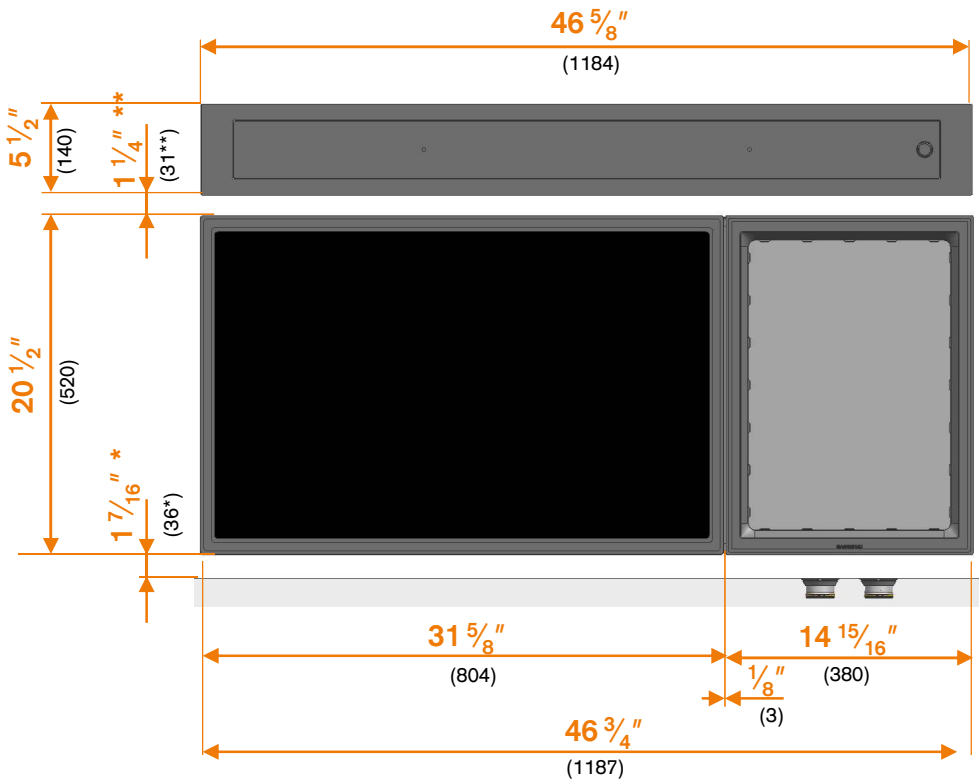
Installation view



20 December 2019

Configuration	AL400721+AR410 710	Min. Work depth		Ventilation mode	Air recirculation
Type reference cooktops	CX 482 + VP 414	Type reference ventilation appliance	AL 400 721	Type reference remote fan unit	AR 410 710

Top view



*: Minimum distance. Distance can be adjusted

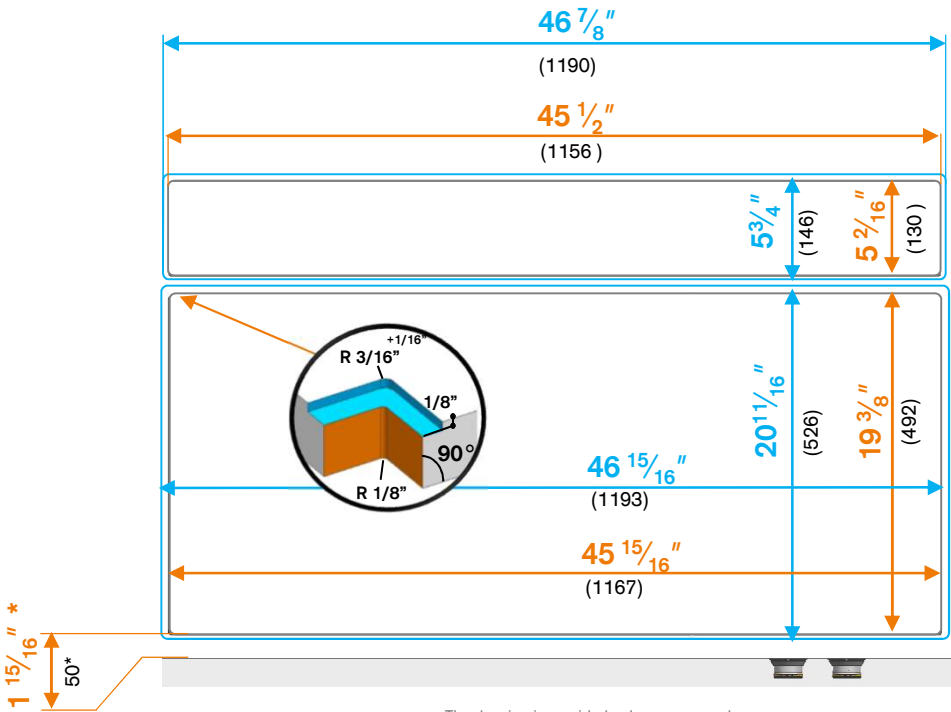
** : Recommended distance.

(inside parenthesis) = mm

GAGGENAU

BSH Hausgeräte GmbH, Carl-Wery-Strasse 34, 81739 Munich, Germany
Chairman of the Supervisory Board: Uwe Raschke
Directors: Dr. Karsten Ottenberg (Chairman), Matthias Ginthum, Johannes Närgen, Dr. Michael Schöllhorn
Registered Office: Munich; Registry Court: Amtsgericht München, HRB 75534, WEEE-Reg.-No. DE 57986696

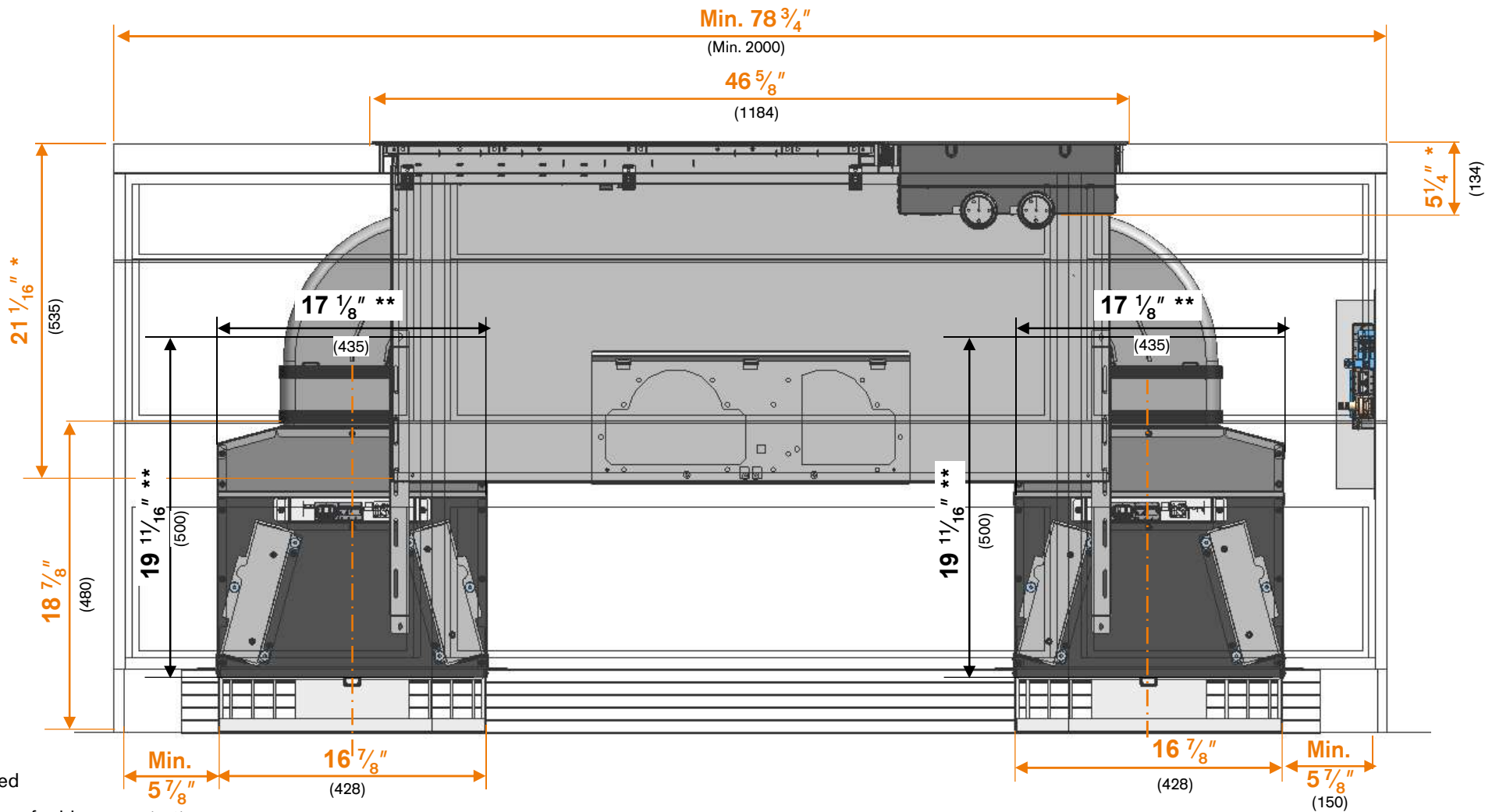
Cut out dimension. Flush mounting



The drawing is provided only as an example.
Please pay attention to the technical installation drawings in the Gaggenau Models and Dimensions. The technical drawings are not based on customer data and are merely for installation recommendation. The exact installation must be verified by the kitchen studio on an individual customer basis.

20 December 2019

Configuration	AL400721+AR410 710	Min. Work depth		Ventilation mode	Air recirculation
Type reference cooktops	CX 482 + VP 414	Type reference ventilation appliance	AL 400 721	Type reference remote fan unit	AR 410 710



* : For flush mounted

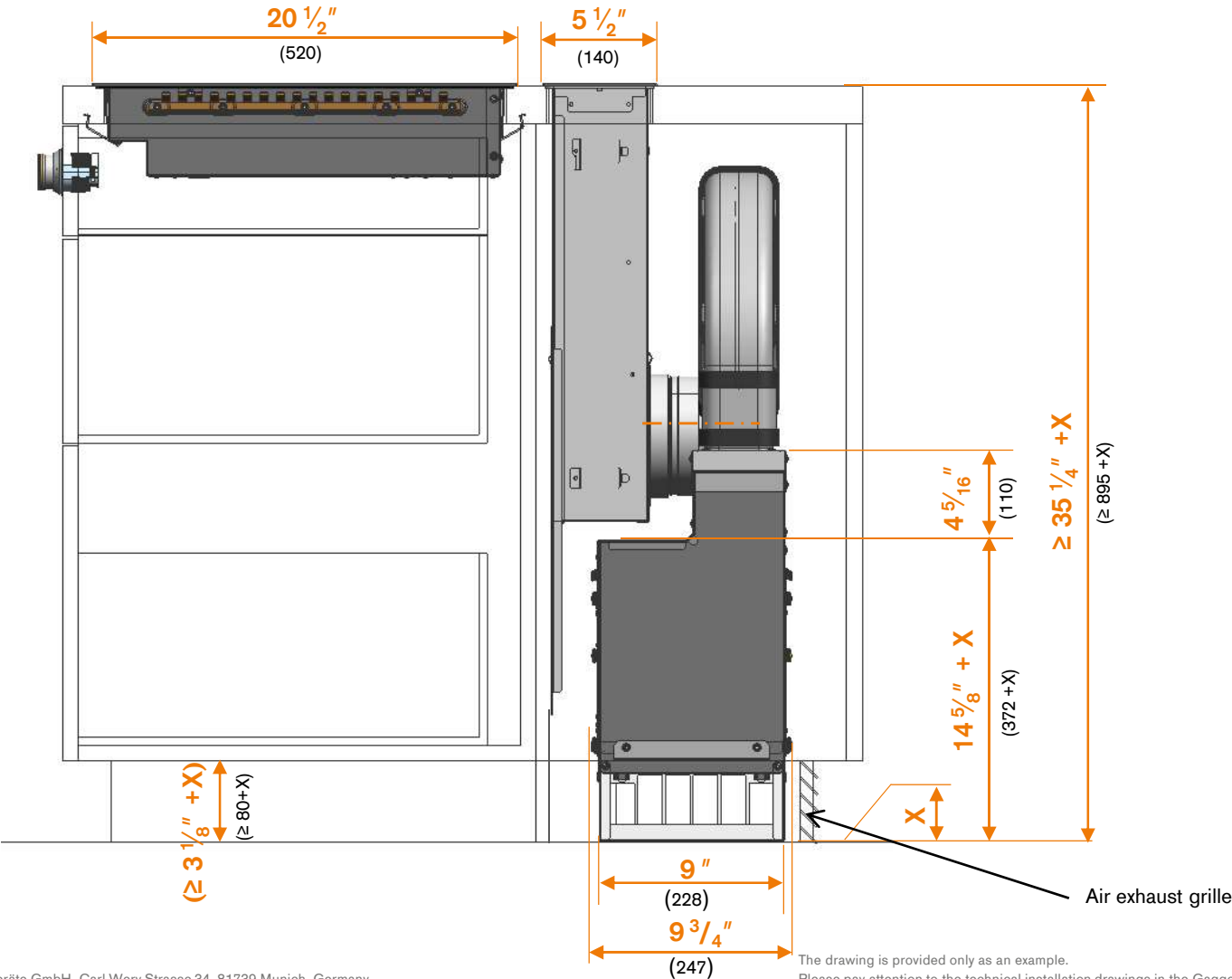
** : Cutout dimensions for blowers (150)

BSH Hausgeräte GmbH, Carl-Wery-Strasse 34, 81739 Munich, Germany
Chairman of the Supervisory Board: Uwe Raschke
Directors: Dr. Karsten Ottenberg (Chairman), Matthias Ginthum, Johannes Närger, Dr. Michael Schöllhorn
Registered Office: Munich; Registry Court: Amtsgericht München, HRB 75534, WEEE-Reg.-No. DE 57986696

The drawing is provided only as an example.
Please pay attention to the technical installation drawings in the Gaggenau Models and Dimensions. The technical drawings are not based on customer data and are merely for installation recommendation. The exact installation must be verified by the kitchen studio on an individual customer basis.

20 December 2019

Configuration	AL400721+AR410 710	Min. Work depth		Ventilation mode	Air recirculation
Type reference cooktops	CX 482 + VP 414	Type reference ventilation appliance	AL 400 721	Type reference remote fan unit	AR 410 710

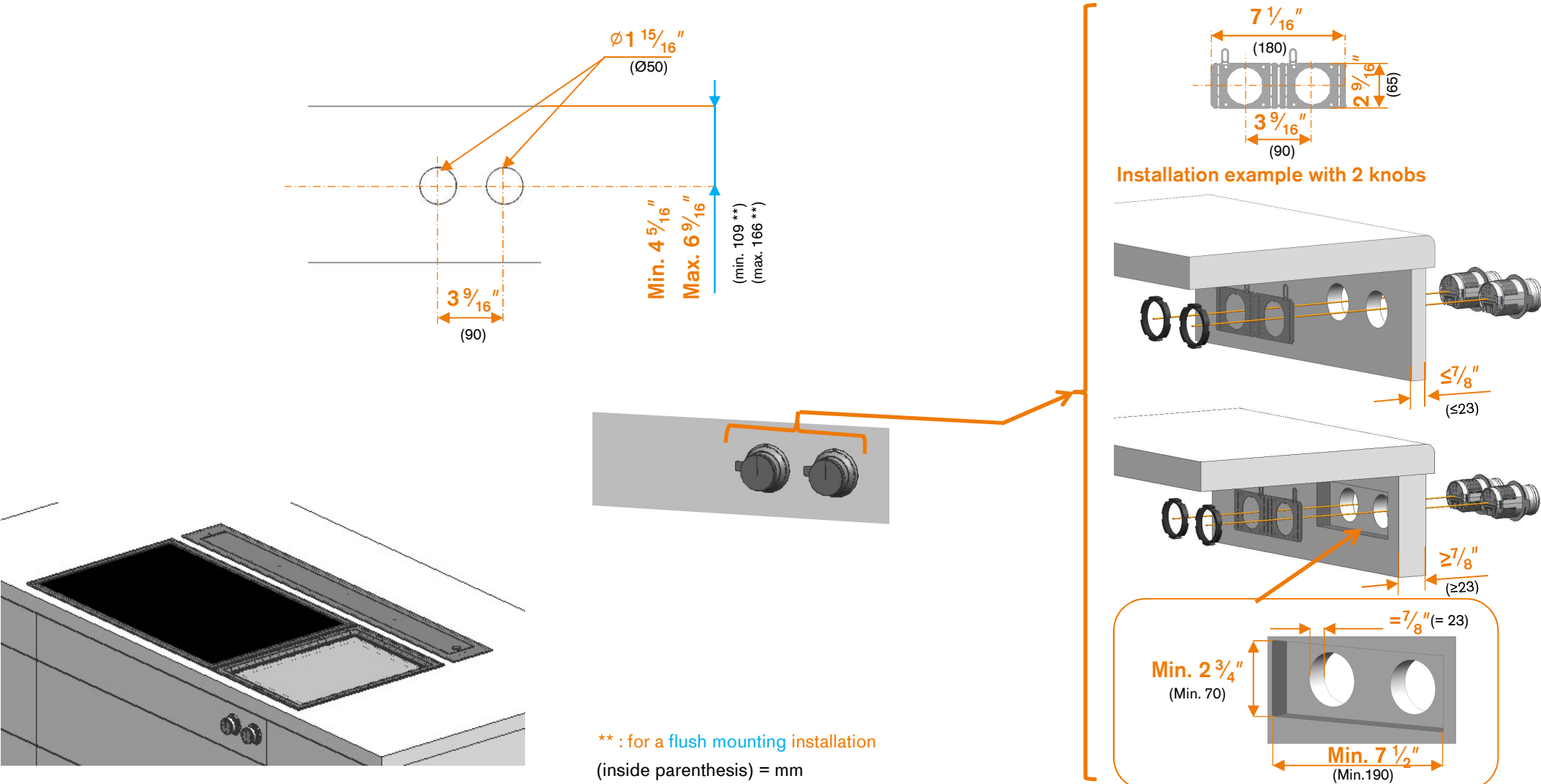


BSH Hausgeräte GmbH, Carl-Wery-Strasse 34, 81739 Munich, Germany
Chairman of the Supervisory Board: Uwe Raschke
Directors: Dr. Karsten Ottenberg (Chairman), Matthias Ginthum, Johannes Närger, Dr. Michael Schöllhorn
Registered Office: Munich; Registry Court: Amtsgericht München, HRB 75534, WEEE-Reg.-No. DE 57986696

The drawing is provided only as an example.
Please pay attention to the technical installation drawings in the Gaggenau Models and Dimensions. The technical drawings are not based on customer data and are merely for installation recommendation. The exact installation must be verified by the kitchen studio on an individual customer basis.

20 December 2019

Configuration	AL400721+AR410 710	Min. Work depth		Ventilation mode	Air recirculation
Type reference cooktops	CX 482 + VP 414	Type reference ventilation appliance	AL 400 721	Type reference remote fan unit	AR 410 710



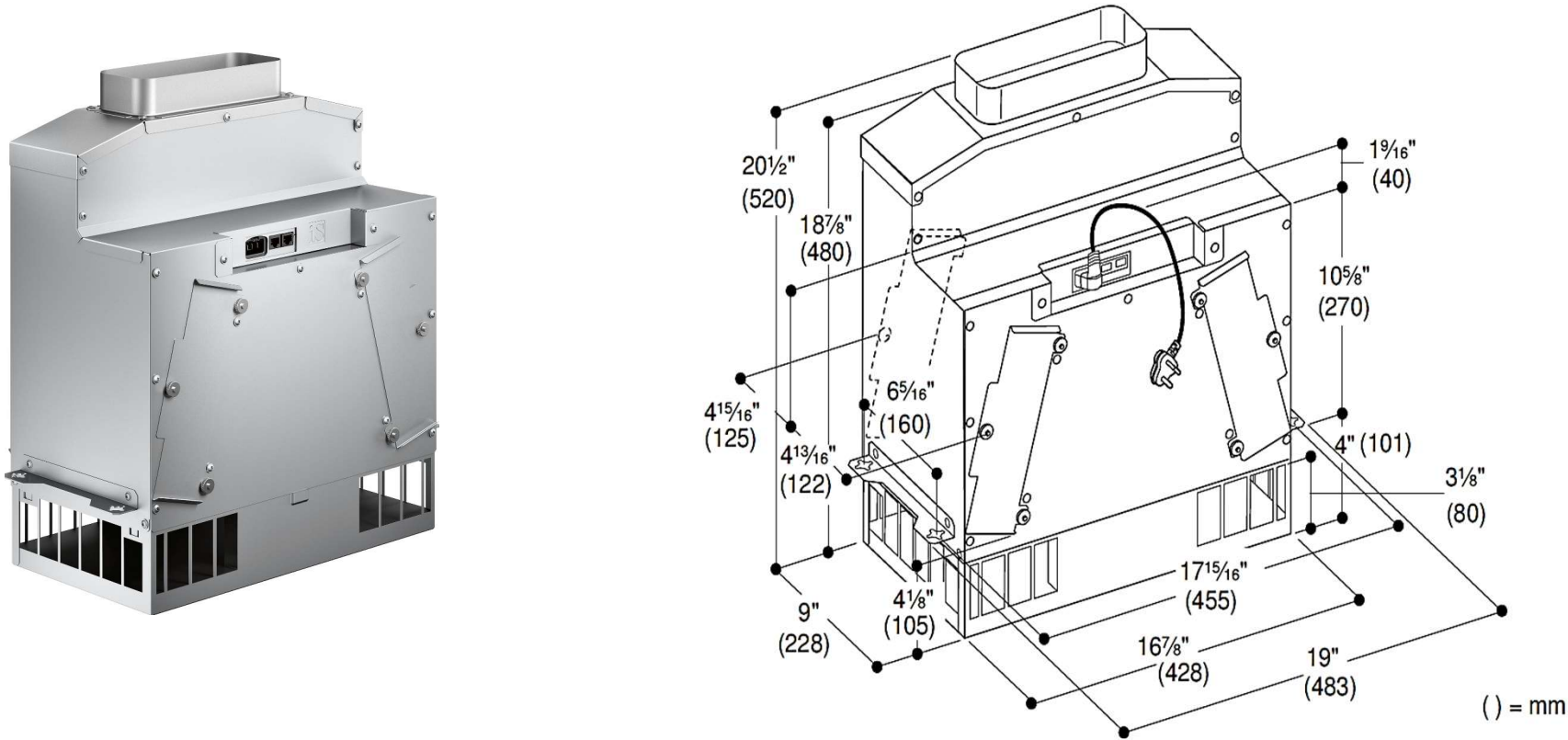
BSH Hausgeräte GmbH, Carl-Wery-Strasse 34, 81739 Munich, Germany
Chairman of the Supervisory Board: Uwe Raschke
Directors: Dr. Karsten Ottenberg (Chairman), Matthias Ginthum, Johannes Närgen, Dr. Michael Schöllhorn
Registered Office: Munich; Registry Court: Amtsgericht München, HRB 75534, WEEE-Reg.-No. DE 57986696

The drawing is provided only as an example.
Please pay attention to the technical installation drawings in the Gaggenau Models and Dimensions. The technical drawings are not based on customer data and are merely for installation recommendation. The exact installation must be verified by the kitchen studio on an individual customer basis.

20 December 2019

Configuration	AL400721+AR410 710	Min. Work depth		Ventilation mode	Air recirculation
Type reference cooktops	CX 482 + VP 414	Type reference ventilation appliance	AL 400 721	Type reference remote fan unit	AR 410 710

Information about remote fan unit AR 400 710



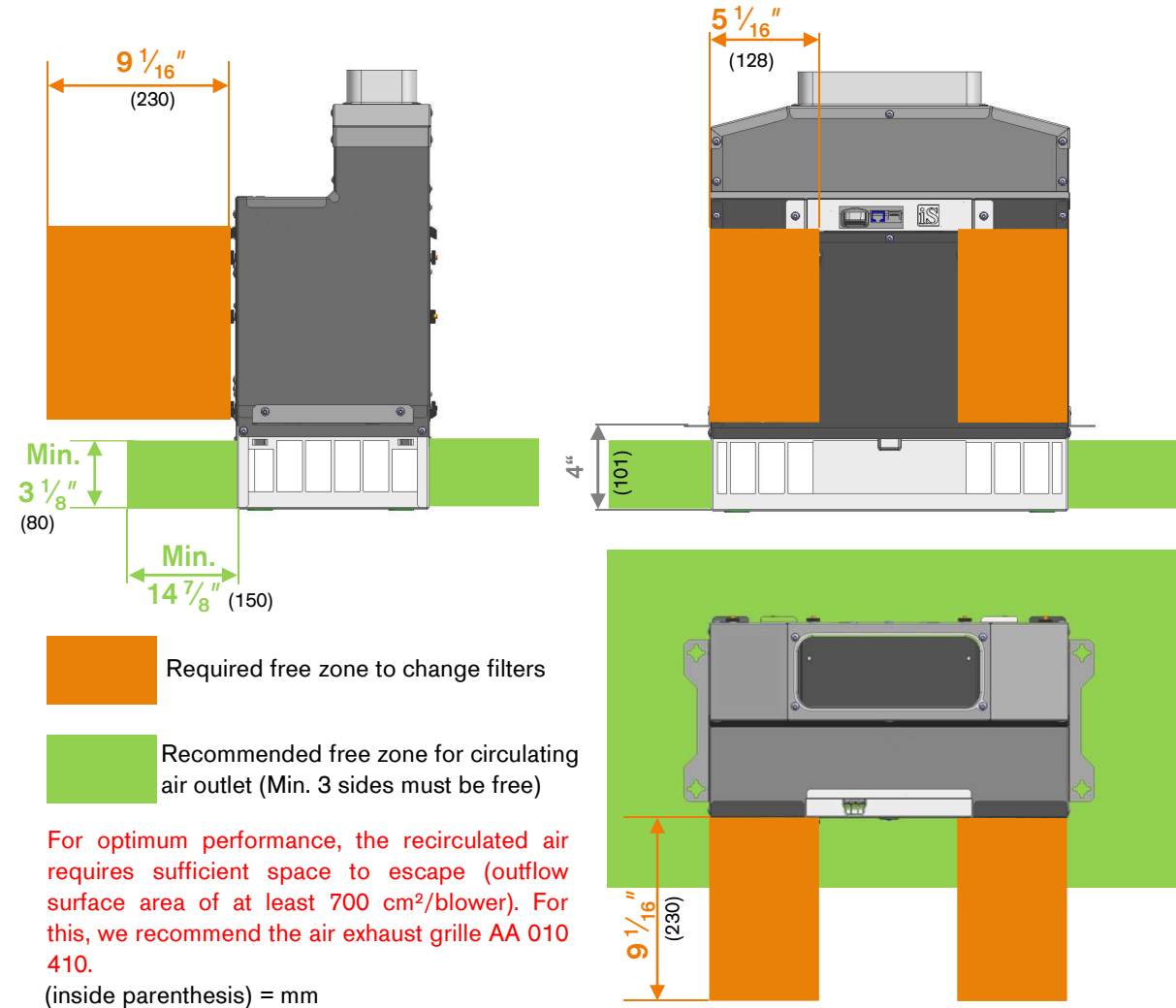
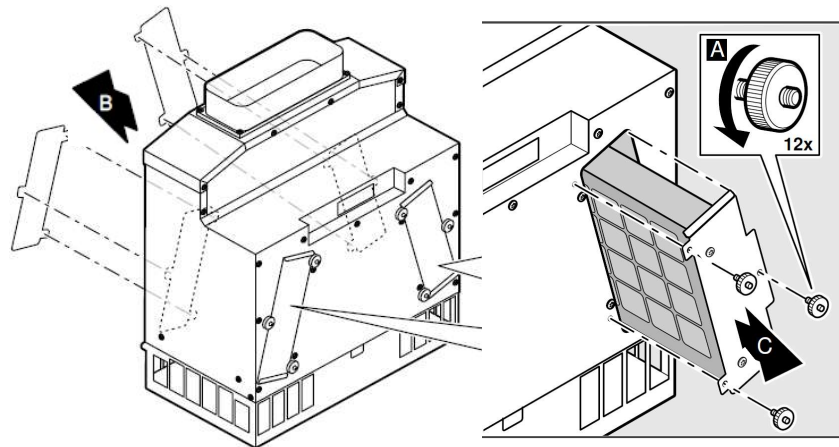
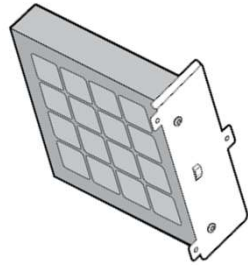
20 December 2019

Configuration	AL400721+AR410 710	Min. Work depth		Ventilation mode	Air recirculation
Type reference cooktops	CX 482 + VP 414	Type reference ventilation appliance	AL 400 721	Type reference remote fan unit	AR 410 710

Information about installation

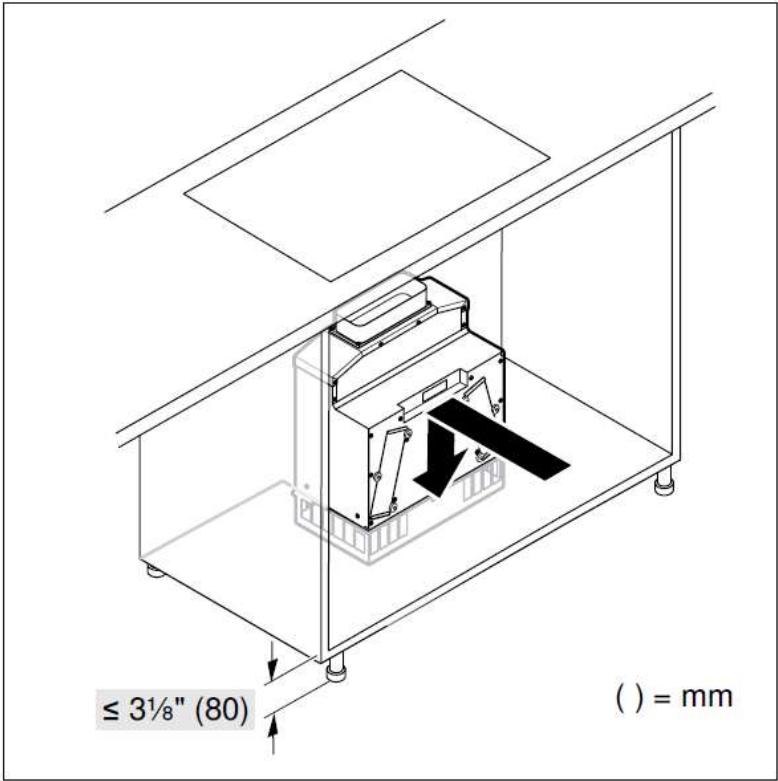
The filters come preinstalled in the appliance and can only be taken out from one side. If required by the installation situation, you can fit the filters on the opposite side so that they are still accessible following installation.

- 1- Loosen the screws on the filter covers on both sides (A). Remove the filter covers (B).
- 2- Carefully remove the filters with both hands (C).
- 3- Insert the filter on the opposite side. Secure each one using three straight-knurled nuts.
- 4- Use three straight-knurled nuts to secure each filter cover to the filter openings that are not in use.

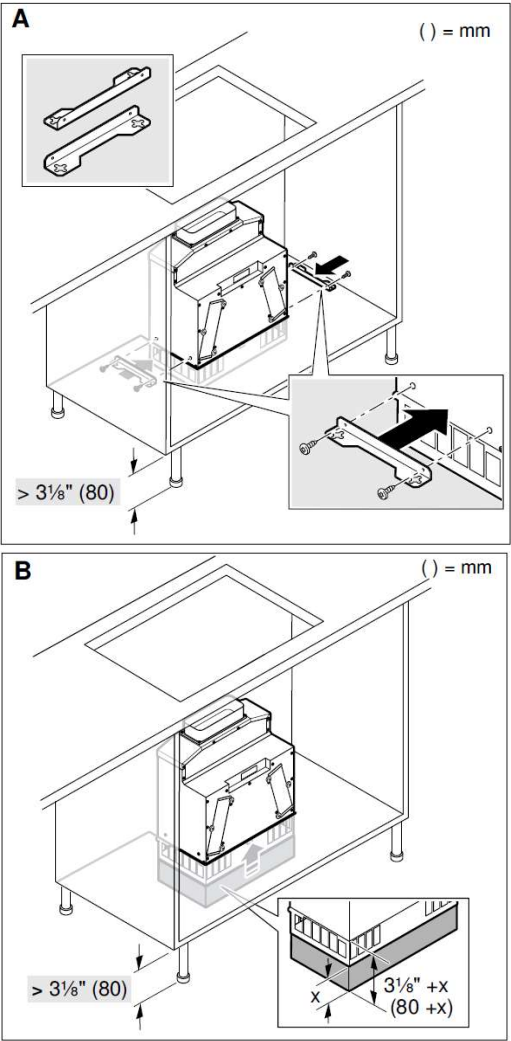
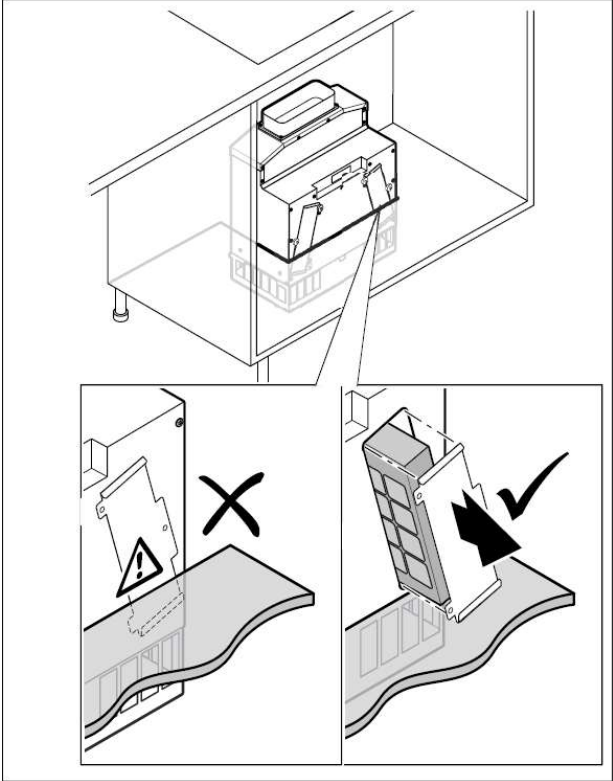


Configuration	AL400721+AR410 710	Min. Work depth		Ventilation mode	Air recirculation
Type reference cooktops	CX 482 + VP 414	Type reference ventilation appliance	AL 400 721	Type reference remote fan unit	AR 410 710

Information about installation



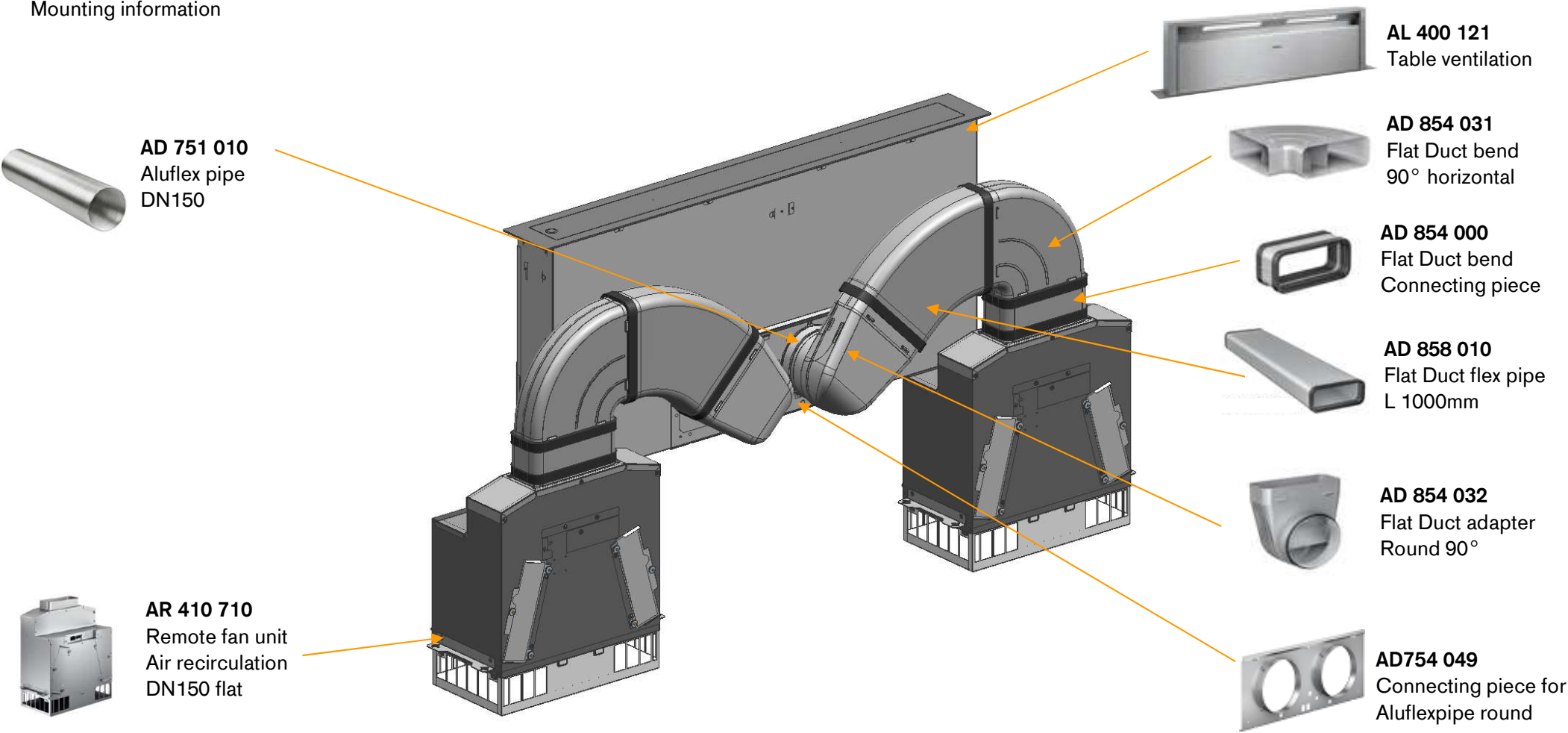
(inside parenthesis) = mm



The drawing is provided only as an example.
Please pay attention to the technical installation drawings in the Gaggenau Models and Dimensions. The technical drawings are not based on customer data and are merely for installation recommendation. The exact installation must be verified by the kitchen studio on an individual customer basis.

Configuration	AL400721+AR410 710	Min. Work depth		Ventilation mode	Air recirculation
Type reference cooktops	CX 482 + VP 414	Type reference ventilation appliance	AL 400 721	Type reference remote fan unit	AR 410 710

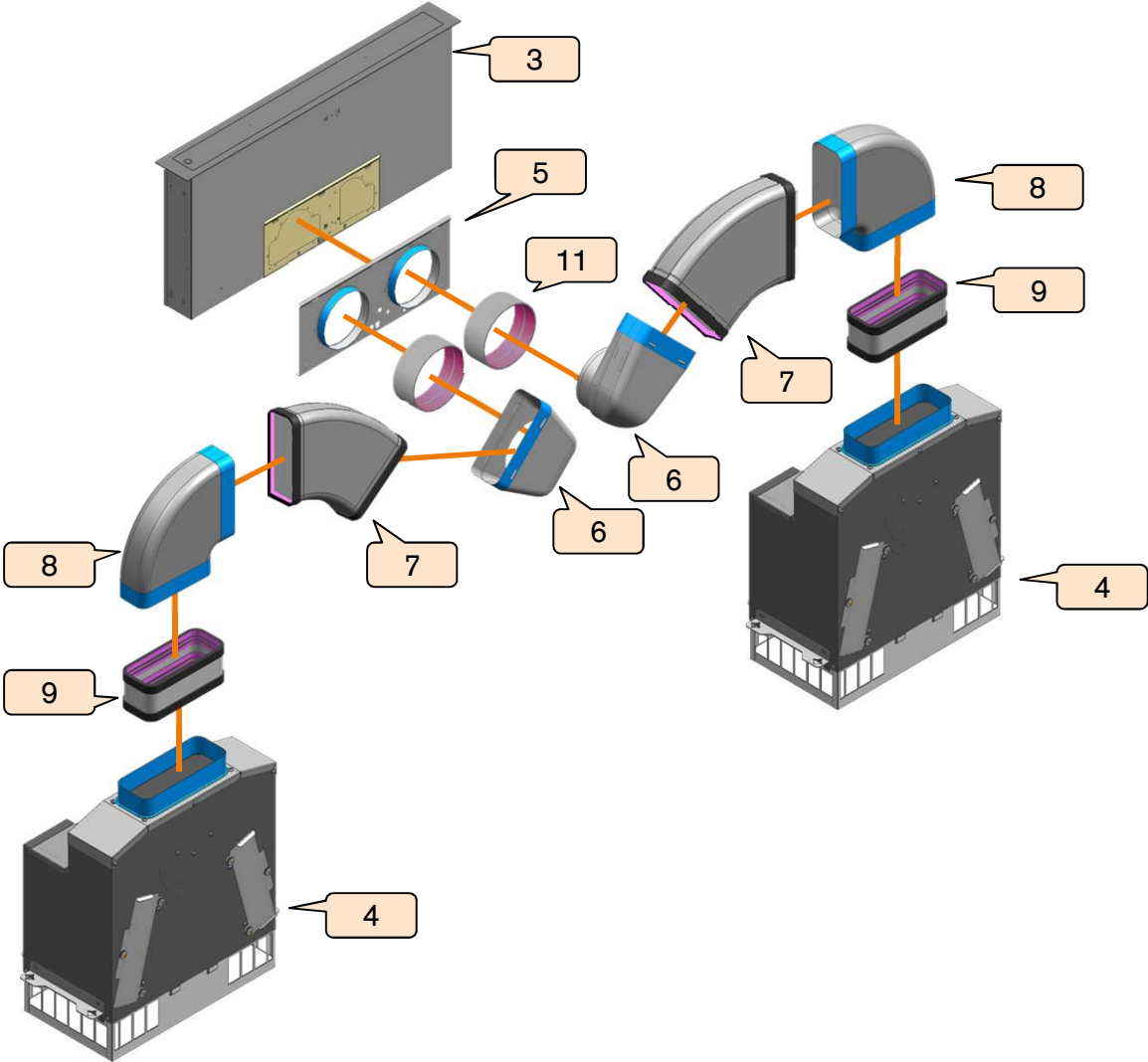
Mounting information



20 December 2019

Configuration	AL400721+AR410 710	Min. Work depth		Ventilation mode	Air recirculation
Type reference cooktops	CX 482 + VP 414	Type reference ventilation appliance	AL 400 721	Type reference remote fan unit	AR 410 710

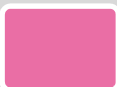
Mounting information



See "Bill of material" page



Blue : male connection



Pink: female connection

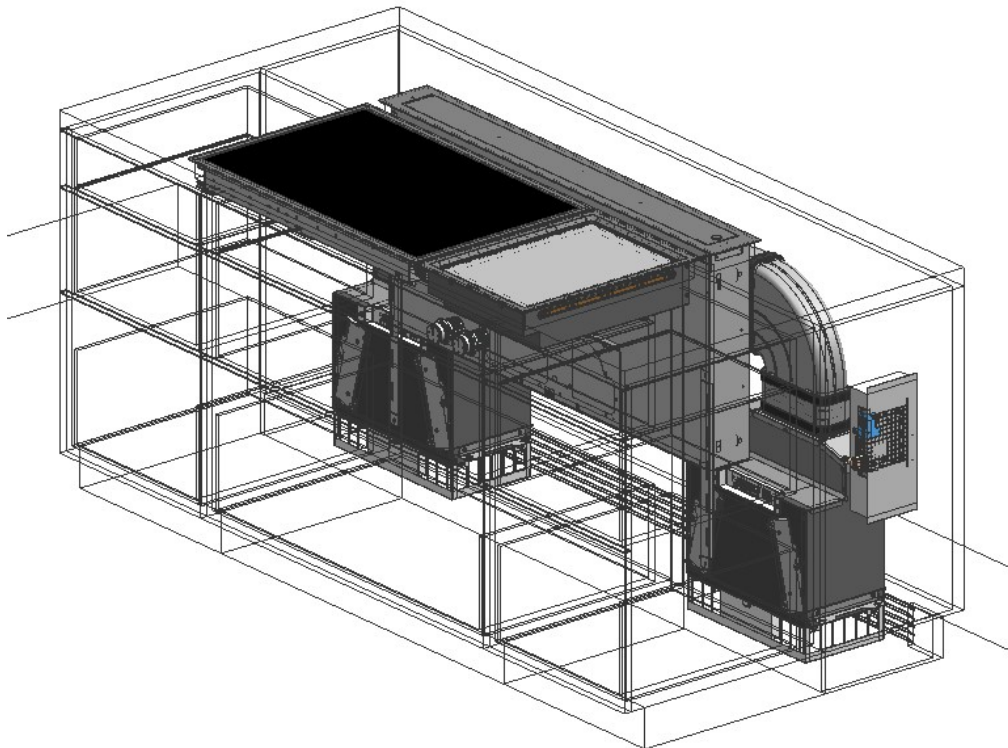


Orange: into male connection
DN 150

20 December 2019

Configuration	AL400721+AR410 710	Min. Work depth		Ventilation mode	Air recirculation
Type reference cooktops	CX 482 + VP 414	Type reference ventilation appliance	AL 400 721	Type reference remote fan unit	AR 410 710

Bill of material



Position	Quantity	Part number	Appliance Design / Accessories Design
1	1	CX 482 610	Vario 400 series full surface induction cooktop
2	1	VP 414 611	Vario Teppan Yaki 400 Series
3	1	AL 400 721	Table ventilation
4	2	AR 410 710	Remote fan unit Air recirculation DN150 flat
5	1	AD 754 049	Connecting piece for Aluflexpipe round
6	2	AD 854 032	Flat Duct adapter Round 90°
7	2	AD 858 010	Flat Duct flex pipe L 1000mm
8	2	AD 854 031	Flat Duct bend 90° horizontal
9	2	AD 854 000	Flat Duct bend Connecting piece
10	1	VA 420 200 Or VA 420 210	Connection strip flush mounting Connection strip surface mounting
11	1	AD 751 010	Aluflex pipe DN150
12	2	AA 010 410	Air exhaust grille
13	1	AD 990 091	Adhesive tape for duct components Aluminium

Please check the availability of the products in your country.