

Additional planning notes for Vario cooling Expressive series

The side walls of the adjacent cabinetry have to be dimensionally stable, as the cooling appliances are secured in the cut out with only an anti-tilt bracket on the top back and on the bottom at the side.

The cooling appliances may be installed handle-to-handle as a side-by-side combination, using installation kit RVA 460 000. If installed hinge-to-hinge, an additional filler panel is required to open both units simultaneously. If restrictions in use are acceptable (e.g. doors cannot open at the same time), the appliances may be joined directly using the same RVA 460 000 kit.

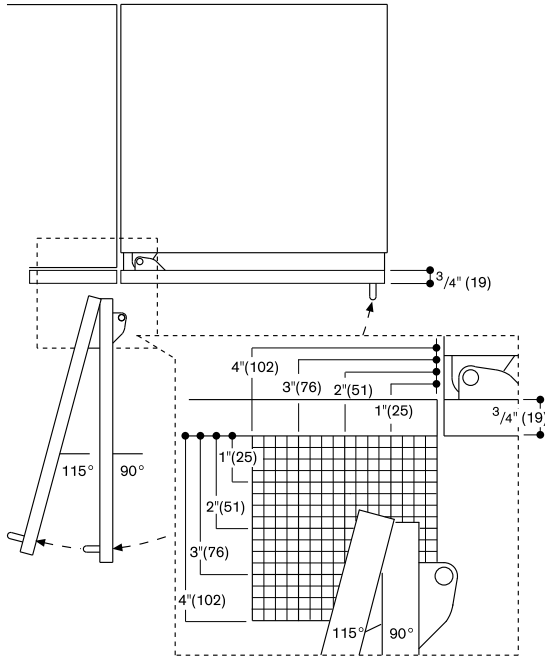
Door opening angle

To ensure correct kitchen planning it is essential to take into account the opening angle of the appliance's door plus the door panel and handle. Collisions with kitchen furniture (counter tops, handles of adjacent cabinetry, etc.) or parts of the room (walls, protrusions, etc.) need to be avoided.

The necessary space for the hinge movement and the resulting clearances, depending on the door opening angle, to adjacent cabinetry and its handle, are shown in the following drawing. The clearances are based on a door panel thickness of $\frac{3}{4}$ " (19 mm).

In case of a potential collision, the following options are available to solve the situation:

- Limit the door opening angle to 90° (standard 115°). A pin to limit the opening is enclosed with the appliance
- Place a spacer between the appliance and the cabinetry, functioning like a bumper to absorb impact and prevent collision
- Rearrange surrounding cabinetry or appliance



Required clearances to adjacent cabinetry and handles vary by door opening angle and panel thickness. The hinge projection and resulting minimum distance are illustrated in the drawing. Dimensions shown are based on a $\frac{3}{4}$ " (19 mm) door panel thickness.

Door opening direction

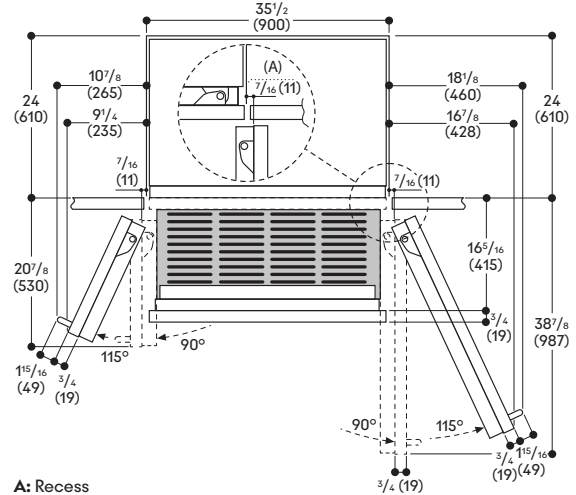
When performing a change of the door opening direction, it may be necessary to order additional installation accessories.

	RVC 497	RVC 477	RVC 467	RVF 497	RVF 477	RVF 467	RVF 417	RVW 467	RVW 417
Right-hinged	•	•	•					•	•
Left-hinged				•	•	•	•		
Necessary accessory to perform door direction change									
RVA 466 900	For RVC and RVF, cut out width 35 1/2" (90 cm). •								
RVA 466 700	For RVC and RVF, cut out width 30" (76.2 cm). •								
RVA 466 600	For RVC and RVF, cut out width 24" (61 cm). •								
RVA 466 100	For RVF, cut out width 18" (45.7 cm). •								
RVA 466 610	For RVW, cut out width 24" (61 cm).* •								
RVA 466 110	For RVW, cut out width 18" (45.7 cm).* •								

The fridge-freezer combinations RVB 497 and RVB 477 already include all necessary parts to change the door direction.

* If using the dark brushed stainless steel door panels with a handle (RVA 421 122L / RVA 421 122R (18") or RVA 421 622L / RVA 421 622R (24")), select the correct panel for the intended hinge side of the RVW. No door direction change accessory needed.

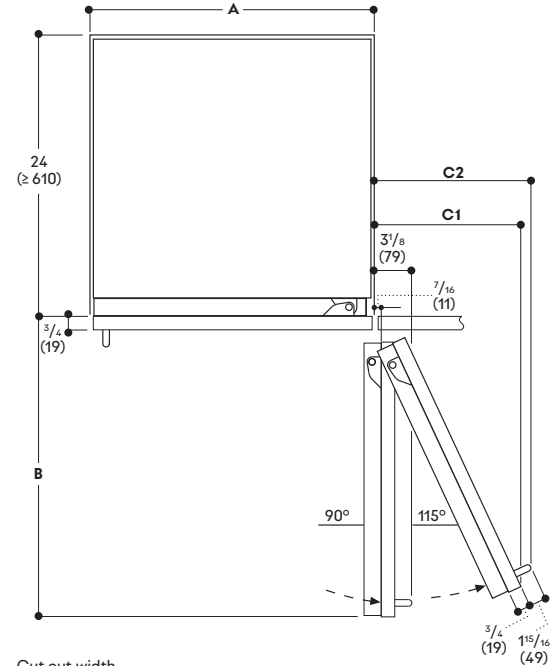
Wall clearance for RVY / RVB fridge-freezer combinations



A: Recess

The clearances are based on a door panel thickness of $\frac{3}{4}$ " (19 mm) and a Gaggenau handle with a height of $1\frac{15}{16}$ " (49 mm)

Wall clearance for RVC refrigerator / RVF freezer / RVW wine cabinet



Cut out width

A	B	C1	C2
18" (457)	20 15/16" (525)	9 1/2" (235)	10 7/16" (265)
24" (610)	26 3/8" (677)	11 3/16" (299)	13" (330)
30" (762)	32 1/16" (830)	14 3/16" (364)	15 7/16" (395)
35 1/2" (900)	38 3/16" (970)	16 7/16" (420)	17 7/16" (442)

The clearances are based on a door panel thickness of $\frac{3}{4}$ " (19 mm) as well as the height of a Gaggenau handle of $1\frac{15}{16}$ " (49 mm)

Installation cut out

Unlike conventional built-in appliances, Vario cooling Expressive series appliances stand on the floor. Therefore the installation cut out is a space in a line of cabinet units.

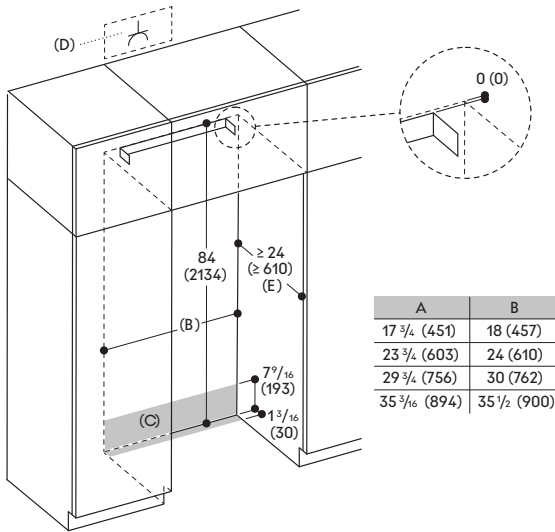
Installation cut out

The specified dimensions of the installation cut out must be ensured to guarantee a proper installation of the appliance and a seamless integration into the kitchen design. It is particularly important that the installation cut out is square. The side walls must be smooth, not uneven and without protrusions. Use the appropriate tools, e.g. spirit level, diagonal measurements, etc. to determine whether the installation cut out is square.

The side walls and the upper molding of the installation cut out must be at least $\frac{5}{16}$ " (16 mm) thick.

The anti-tip bracket must be installed at the standard installation height of 84" (2134 mm). If the appliance is to be installed on a pedestal, the mounting height of the anti-tip bracket must be adjusted upwards accordingly.

Installation cut out for a single appliance



- A: Appliance width
- B: Width of installation cut out
- C: Area for guiding water supply hose
- D: Outlet
- E: Depth of installation cut out, depending on kitchen design

Installation cut out for a side-by-side solution

Vario cooling Expressive series appliances offer options for side-by-side combinations to create a unique kitchen design. The required width of the installation cut out is the sum of the cut out widths of the single appliances. Height and depth of the installation cut out correspond to the specifications of the individual appliances.

It is important to comply with the specified dimensions to ensure enough space for the electrical and water connection. Please refer to the specifications of the individual units for the exact dimensions.

Location

The appliance should be installed in a dry and well-ventilated room. The location of the appliance should not be subject to direct sunlight or be near a heat source, such as a cooktop, a radiator, etc.

If an installation next to a heat source is unavoidable, the following minimum distances to that source are recommended:

- 1 $\frac{3}{16}$ " (3 cm) to electric or gas cooktops
- 1 $\frac{3}{16}$ " (3 cm) to electric or gas ovens
- 11 $\frac{3}{16}$ " (30 cm) to an oil-fired or solid-fuel cooktop

Surface

To ensure that the appliance is installed securely and functions properly, the floor must be level and even. Moreover, it must consist of a hard, rigid material and not give way, due to the heavy weight of a fully loaded appliance. The following table shows the resulting weight of an appliance when installed with a door panel having the maximum permitted weight and being fully loaded.

Maximum load weight

Model	Description	Max. load weight
RVY 497	Fridge-freezer combination, cut out width 35 $\frac{1}{2}$ " (90 cm), 2 doors	1,288 lbs. (584 kg)
RVB 497	Fridge-freezer combination, cut out width 35 $\frac{1}{2}$ " (90 cm), 1 door	1,111 lbs. (504 kg)
RVB 477	Fridge-freezer combination, cut out width 30" (76.2 cm), 1 door	1,063 lbs. (482 kg)
RVC 497	Refrigerator, cut out width 35 $\frac{1}{2}$ " (90 cm)	1,1489 lbs. (521 kg)
RVC 477	Refrigerator, cut out width 30" (76.2 cm)	977 lbs. (443 kg)
RVC 467	Refrigerator, cut out width 24" (61 cm)	763 lbs. (346 kg)
RVF 497	Freezer, cut out width 35 $\frac{1}{2}$ " (90 cm)	1,124 lbs. (510 kg)
RVF 477	Freezer, cut out width 30" (76.2 cm)	963 lbs. (437 kg)
RVF 467	Freezer, cut out width 24" (61 cm)	767 lbs. (348 kg)
RVF 417	Freezer, cut out width 18" (45.7 cm)	611 lbs. (277 kg)
RVW 467	Wine climate cabinet, cut out width 24" (61 cm)	831 lbs. (377 kg)
RVW 417	Wine climate cabinet, cut out width 18" (45.7 cm)	736 lbs. (334 kg)

In case of doubt, consult an architect, structural engineer or construction expert. If required, the floor must be reinforced. To ensure the proper functionality of the ice maker, the appliance must be upright.

Neighboring cabinetry

The appliance is securely positioned into its cut out by screwing it firmly to the adjacent and top cabinetry. It must be ensured that all cabinetry onto which the appliance is fastened, is firmly connected to the floor or the wall. The thickness of the baseboard can be maximum $\frac{3}{4}$ " (19 mm).

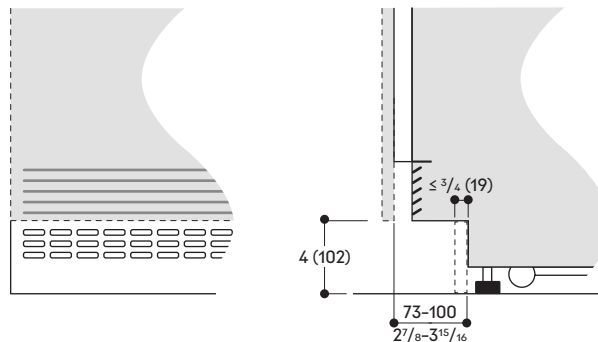
Toe kick area

Important!

Poor ventilation damages the appliance!

It is not permitted to cover the air inlets and the exhaust air outlets of the appliance in the toe kick area.

Based on the standard installation height the toe kick height is 4" (102 mm) (the distance between the floor and the bottom edge of the door panel installed on the appliance) to ensure a proper operation of the appliance. Take this into consideration also when adjust the feet of the appliance.



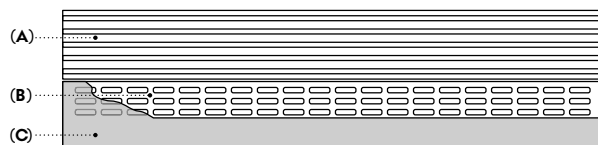
Based on the standard installation height, the height of the plinth is 4" (102 mm). The height of the plinth can be reduced to 2" (50 mm). Maximum skirting board thickness $\frac{3}{4}$ " (19 mm).

For design reasons, it may be necessary to decrease the toe kick height.

It can be reduced to 2" (50 mm). Subsequently the height of the baseboard (C) needs to be reduced as well, to match the now lower toe kick height, so the additional ventilation openings (B) are not fully covered. Only then, a proper operation of the appliance can be guaranteed.

Example: The height of the toe kick is 2 $\frac{3}{4}$ " (70 mm). In this case the baseboard shall not be higher than 2 $\frac{3}{4}$ " (70 mm).

Adhesive connectors on the appliance ensure a secure mounting of the baseboard.



- A: Air inlets and exhaust air outlets
- B: Ventilation openings in baseboard area
- C: Baseboard

The height of the toe kick can be reduced to 2" (50 mm) based on the standard installation height. The baseboard height needs to be reduced to match the toe kick height to allow for the additional ventilation.

Custom door panels

Upper molding

Important!

The upper molding of the installation cut out must always have a depth of at least $3\frac{15}{16}$ " (100 mm) (measured from the front edge of the appliance) and be at least $\frac{5}{8}$ " (16 mm) thick. Only then can secure installation of the appliance in the cut out be guaranteed.

The height of custom door panels on the appliance is dependent on:

- The overall height of the appliance
- The distance from the bottom edge of the door panel to the floor
- The appliance type (one-door or multi-door appliances)

This height may vary depending on the installation conditions. For design reasons it may be necessary to lengthen the cabinet door upwards by extending it beyond the top of the appliance.

Dimensions of custom door panels

The cabinetry, the height of the toe kick, the overall height of the kitchen and other determining dimensions of the kitchen must be considered in order to plan the exact positioning of the door panel, so that the appliance integrates perfectly into the overall kitchen design.

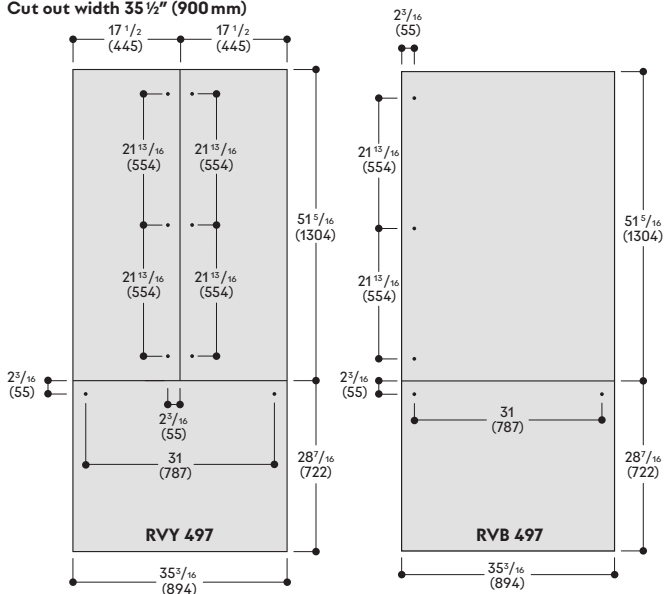
The following drawings show the basic dimensions of the dark stainless steel door panels. These dimensions can be used as a reference for designing custom door panels. These are designed to fit the following basic specifications:

- Height of the toe kick: 4 " (102 mm)
- Overall height of the installation cut out: 84 " (2134 mm)
- Gaps: $\frac{1}{8}$ " (3 mm)
- Door panel thickness: $\frac{3}{4}$ " (19 mm)

Important!

The following drawings are not a substitute for detailed designs. Compliance with specified requirements relating to kitchen design is essential.

Cut out width $35\frac{1}{2}$ " (900 mm)



RVY 497

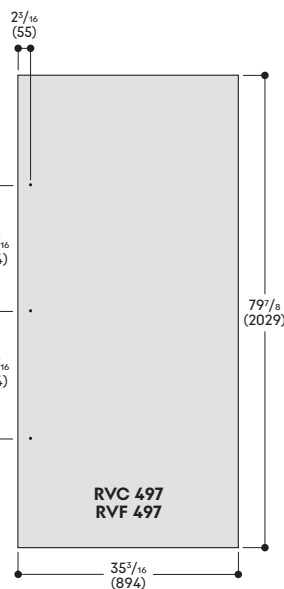
RVB 497

Doors can operate with or without handles.

The door panel thickness is $\frac{3}{4}$ " (19 mm).

The maximum door panel dimensions are based on a clearance of $\frac{1}{8}$ " (3 mm), based on a single cut out.

A: The width of the lateral frame parts can be $2\frac{15}{16}$ " - $3\frac{1}{4}$ " (74 - 82 mm).



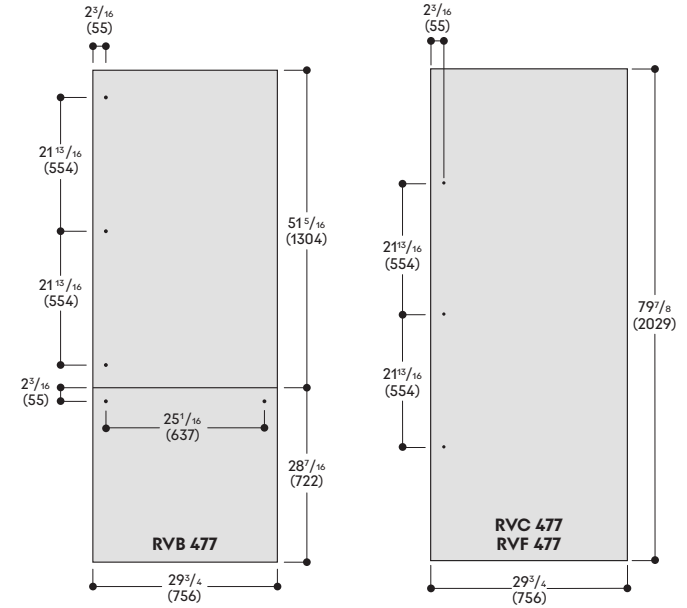
RVC 497

RVF 497

All measurements in inches (mm).

Gaggenau reserves the absolute and unrestricted right to change product materials and specifications, at any time, without notice. Consult the product's installation instructions for final dimensional data and other details prior to making cut out. Warranties: Please see Use & Care manual or Gaggenau website for statement of limited product warranty. For more information on our entire line of products, go to www.gaggenau.com or call 1-877-442-4436.

Cut out width 30 " (762 mm)

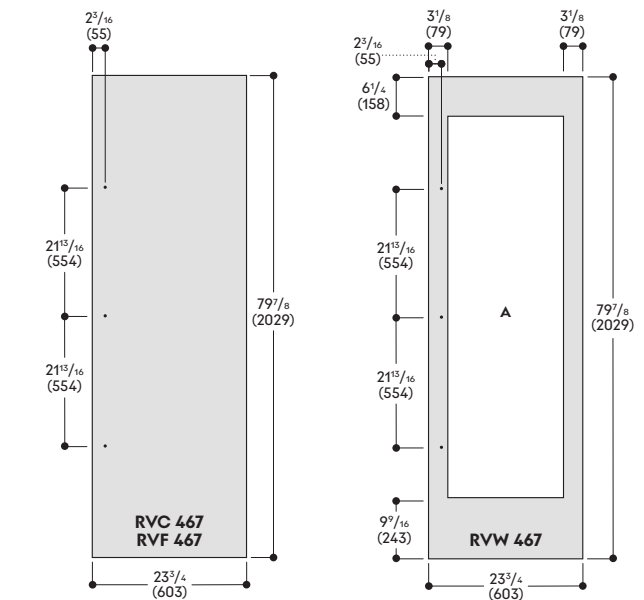


RVB 477

RVC 477

RVF 477

Cut out width 24 " (610 mm)

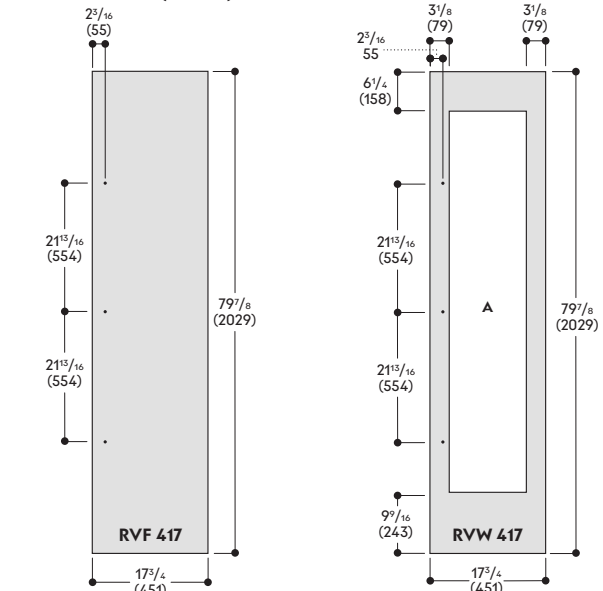


RVC 467

RVF 467

RVW 467

Cut out width 18 " (457 mm)



RVF 417

RVW 417

www.gaggenau.com/us
Revised: April 2026

Custom door panels | Replacing appliances

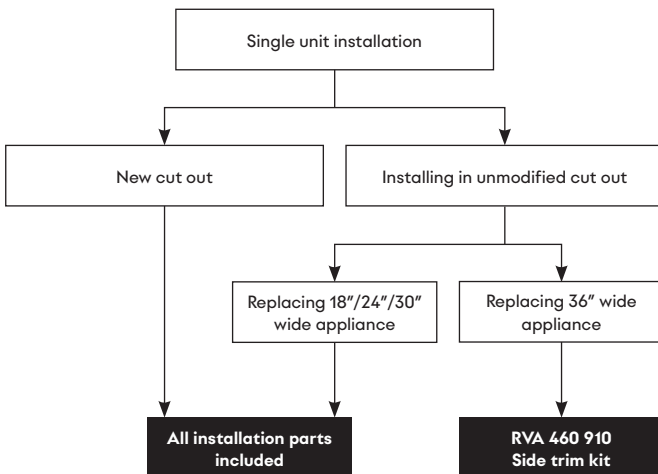
A custom door panel can exceed the dimensions of the dark stainless steel door panels, as long as all given restrictions in the planning notes are considered correctly. Ensure the maximum panel weights shown in the following table are not exceeded.

Maximum permitted door panel weight

Model	Description	Max. panel weight
RVY 497	Fridge-freezer combination, cut out width 35 1/2" (90 cm), 2 doors	Each door 141 lbs. (64 kg) / Drawer 31 lbs. (14 kg)
RVB 497	Fridge-freezer combination, cut out width 35 1/2" (90 cm), 1 door	Door 110 lbs. (50 kg) / Drawer 31 lbs. (14 kg)
RVB 477	Fridge-freezer combination, cut out width 30" (76.2 cm), 1 door	Door 132 lbs. (60 kg) / Drawer 37 lbs. (17 kg)
RVC 497	Refrigerator, cut out width 35 1/2" (90 cm)	88 lbs. (40 kg)
RVC 477	Refrigerator, cut out width 30" (76.2 cm)	90 lbs. (41 kg)
RVC 467	Refrigerator, cut out width 24" (61 cm)	90 lbs. (41 kg)
RVF 497	Freezer, cut out width 35 1/2" (90 cm)	84 lbs. (38 kg)
RVF 477	Freezer, cut out width 30" (76.2 cm)	86 lbs. (39 kg)
RVF 467	Freezer, cut out width 24" (61 cm)	86 lbs. (39 kg)
RVF 417	Freezer, cut out width 18" (45.7 cm)	121 lbs. (55 kg)
RVW 467	Wine climate cabinet, cut out width 24" (61 cm)	157 lbs. (71 kg)
RVW 417	Wine climate cabinet, cut out width 18" (45.7 cm)	163 lbs. (74 kg)

The thickness of a custom door panel can range between 5/8" (16 mm) and a maximum of 1 1/2" (38 mm).

Due to a dimensional change on the appliances, specific accessories are necessary depending on the installation situation



Single installation of RVY 497, RVB 497 fridge-freezer combination / RVC 497 refrigerator / RVF 497 freezer into 36" (914 mm) cut out

If a Vario cooling Expressive series RVY 497, RVB 497, RVC 497 or RVF 497 is installed into an existing, unmodified 36" (914 mm) wide cut out (e.g. replacing a Vario cooling 400 series RY 492, RB 492 or RC 492) be aware of the following dimensional changes:

- Appliance width 35 3/16" (894 mm) (compared to 35 3/4" (908 mm) for Vario cooling 400 series)
- Range of height adjustable feet based on the standard installation height +1 7/8" (48 mm) (compared to +1 3/8" (35 mm) / -1/2" (13 mm) for Vario cooling 400 series)

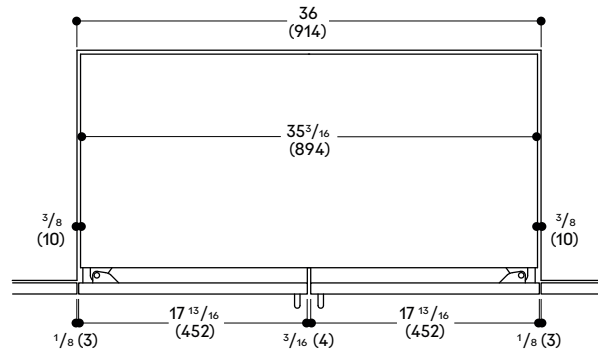
To guarantee the aesthetics of the installation 3/8" (10 mm) wide side trims (RVA 460 910) must be installed on both sides of the appliance to close the gap between the side walls of the appliance and the adjacent cabinetry.

If a Vario cooling 400 appliance was installed in the cut out before, the screwing holes in the upper molding and side walls (if side trims were used) will become visible upon removal of the appliance. To ensure perfect aesthetics of the newly installed Vario cooling Expressive series appliance the screwing holes should be covered. Be aware that the new side trims (RVA 460 910) do not cover these holes.

Existing custom door panels can be re-used as well as the stainless steel door panels from the Vario cooling 400 series. New custom door panels must have the widths shown in the following drawings.

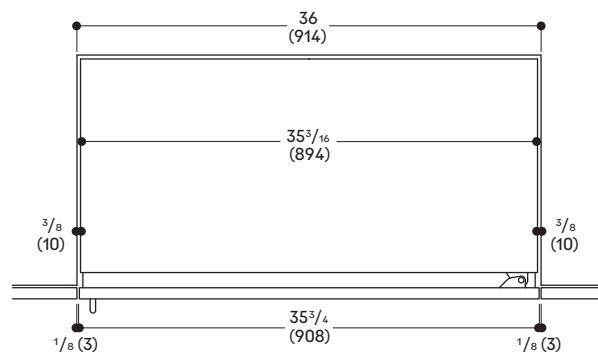
Be aware that any door panel that fully covers the cut out will now protrude beyond the doors of the narrower Vario cooling Expressive series appliance due to the different widths. This has an impact on the hinge movement and resulting clearances to adjacent cabinetry and handles.

Installing RVY 497 fridge-freezer combination into 36" (914 mm) cut out



The resulting lateral gaps of 3/8" (10 mm) can be covered with side trims included in the installation accessory RVA 460 910

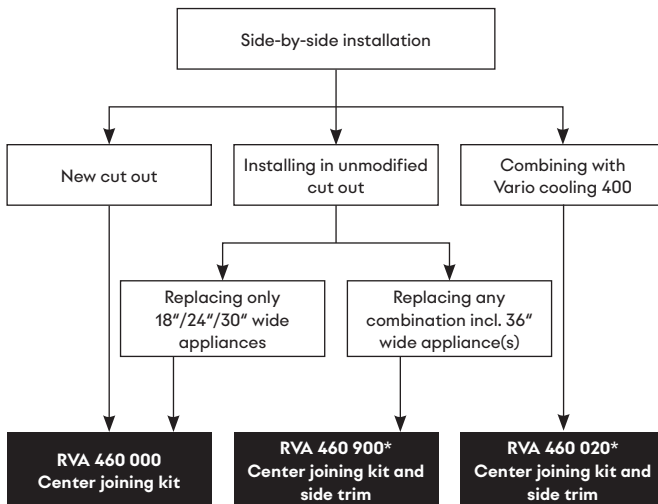
Installing RVB 497 fridge-freezer combination / RVC 497 refrigerator / RVF 497 freezer into 36" (914 mm) cut out



The resulting lateral gaps of 3/8" (10 mm) can be covered with side trims included in the installation accessory RVA 460 910

Replacing appliances

Due to a dimensional change on the appliances, specific accessories are necessary depending on the installation situation



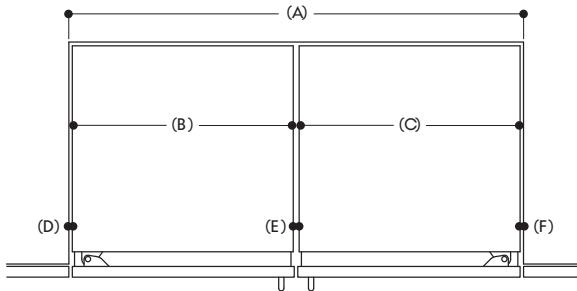
* Accessories include several parts to cover different gap sizes between appliances and to adjacent cabinetry.

Side-by-side installation of RVY 497, RVB 497 fridge-freezer combination / RVC 497 refrigerator / RVF 497 freezer in existing cut out

For a side-by-side installation into an existing, unmodified cut out previously designed for two 35 3/16" (908 mm) wide appliances or one 35 3/16" (908 mm) wide appliance with a narrower one, the installation accessory RVA 460 900 is required. Various side and center trims to cover the gaps between both appliances and between the appliances' side walls and the adjacent cabinetry are included. For the narrow 1/8" (3 mm) side trims the installation accessory RVA 423 141 must be ordered. For a correct installation, every appliance must be centered within their cut out. The spacers on the appliances' side walls may need to be replaced before moving the appliance into the cut out.

Depending on the cut out width (A) and the appliances' widths (B) + (C) the gaps (D) + (E) + (F) have different measurements. See drawing:

Side-by-side installation of RVY 497, RVB 497 fridge-freezer combination / RVC 497 refrigerator / RVF 497 freezer in existing cut out



A: Cut out width	72 (1828)	≤ 66 (≤ 1676)
B: Appliance 1 width	35 3/16 (894)	35 3/16 (894)
C: Appliance 2 width	35 3/16 (894)	≤ 29 3/4 (≤ 756)
D: Left gap	3/8 (10)	3/8 (10)
E: Center gap	13/16 (20)	1/2 (13)
F: Right gap	3/8 (10)	1/8 (3)

Side-by-side installation with Vario cooling 400 series

If a Vario cooling Expressive series appliance must be installed side-by-side with a Vario cooling 400 appliance, the installation accessory RVA 460 020 is required. Be aware that neither the overall appliance design nor the appliances' capabilities match and are not intended to do so.

All installation parts used in the initial Vario cooling 400 side-by-side installation need to be removed, including the heater kit. These are no longer necessary. Depending on the individual installation situation, additional installation accessories may be necessary.

Side and center trims from the initial installation can be reused. Be aware that the colors do not match, nor does the length of the trims fit perfectly, depending on the appliance. Side and center trims matching the new appliance's design to cover the gaps between both appliances and between the appliances' side walls and the adjacent cabinetry are included in the installation accessory RVA 460 020.

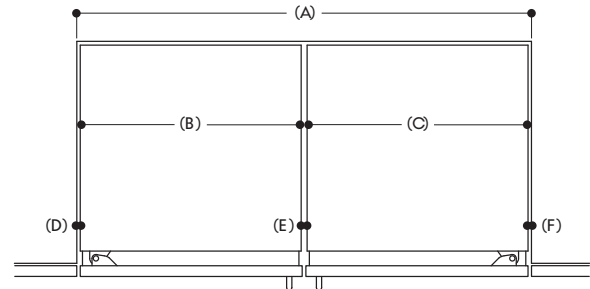
Important!

To join the appliances outside of the cut out and adjust them to the cut out height, the feet of the Vario cooling 400 appliance must be raised.

This leads to:

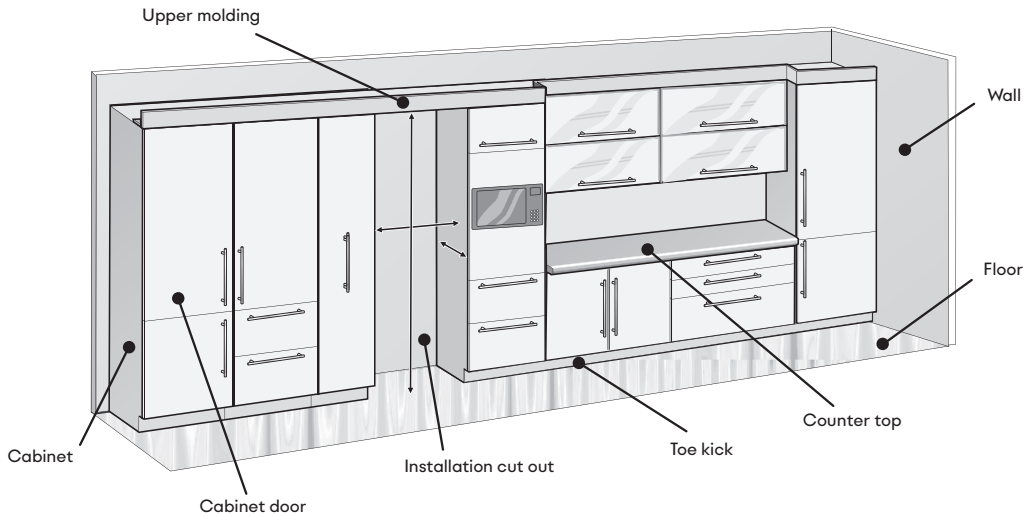
- A visible height difference in the toe kick area between both appliances (when the doors are open)
- The Vario cooling 400 appliance not standing on its rollers, but on its front feet on the ground. To move it into the cut out it must be slightly lifted with a hand truck.

Side-by-side installation with Vario Cooling 400 series

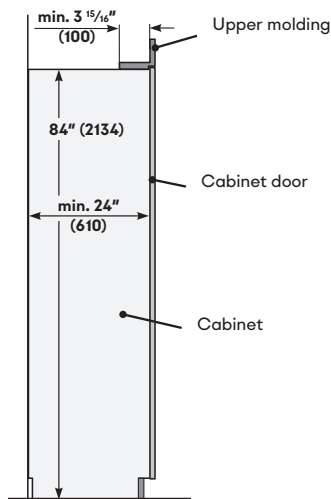


A: Cut out width	72 (1828)	≤ 66 (≤ 1676)
B: Replacement appliance width	35 3/16 (894)	≤ 29 3/4 (≤ 756)
C: Vario Cooling 400 appliance width	≤ 35 3/4 (≤ 908)	≤ 35 3/4 (≤ 908)
D: Left gap	3/8 (10)	1/8 (3)
E: Center gap	1/2 (13)	1/4 (6)
F: Right gap	1/8 (3)	1/8 (3)

Planning principle for an individual appliance

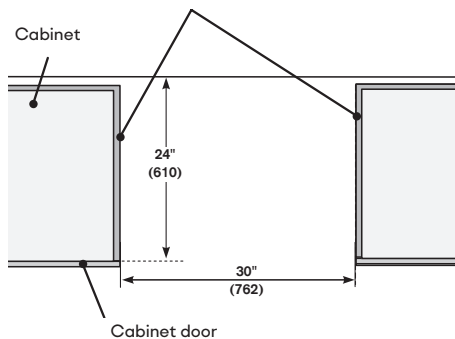


Side view of installation cut out



The side walls of the installation cut out must be completely even and flat along their entire depth.

Top view of installation cut out



Installation cut out for an individual cooling appliance (example: 30" (762 mm) wide)

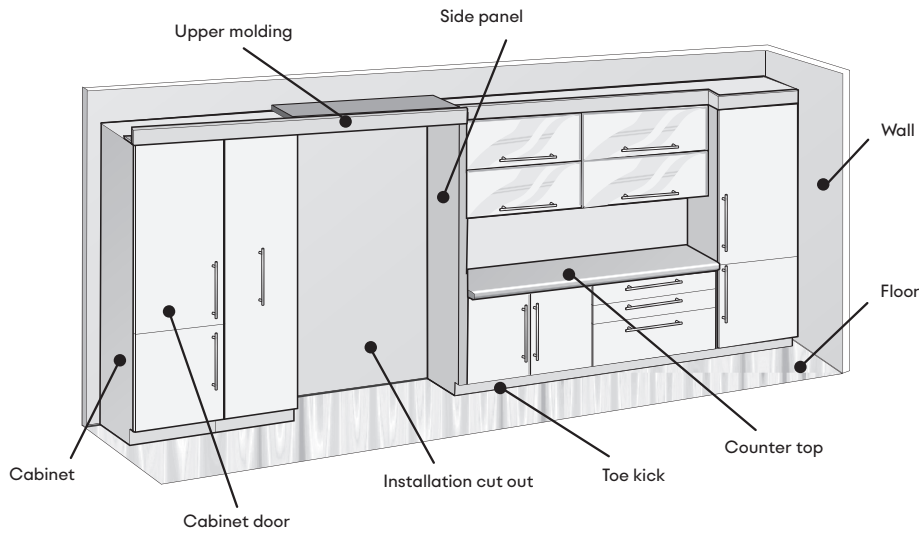
In this example, the installation cut out is formed by two tall cupboards (left and right) with an appropriate upper molding for the cut out.

The cabinet door for the appliance is designed identically to the other kitchen cabinet doors.

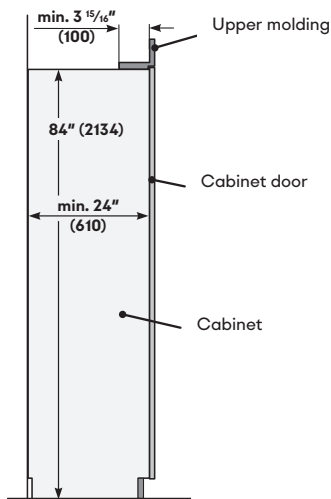
Requirements for the installation cut out:

- The side walls of the installation cut out must be completely even and flat along their entire depth
- Upper molding is at least 3 15/16" (100 mm) deep and made of a solid material (min. 5/8" (16 mm) thick)
- Width of the installation cut out: 30" (762 mm)
- Depth of the installation cut out: min. 24" (610 mm)

Planning principle for a side-by-side solution



Side view of installation cut out



Installation cut out for a side-by-side solution

- 24" (610 mm) cooling appliance (right)
- 18" (457 mm) freezer (left)

In this example, the installation cut out is formed by a tall cupboard (left) and a side panel (right) together with an appropriate upper molding for the cut out.

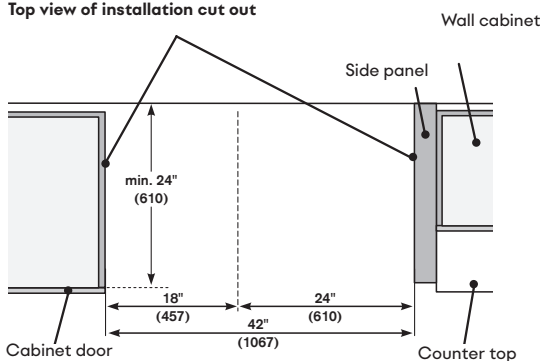
The cabinet door for the appliance is designed identically to the other kitchen cabinet doors.

Requirements for the installation cut out:

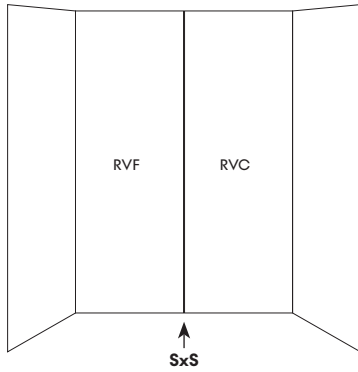
- The side walls of the installation cut out must be completely even and flat along their entire depth
- Upper molding is at least 3 15/16" (100 mm) deep and made of a solid material (min. 5/8" (16 mm) thick)
- Width of the installation cut out:
24" (610 mm) + 18" (457 mm) = 42" (1067 mm)
- Depth of the installation cut out: min. 24" (610 mm)

The side walls of the installation cut out must be completely even and flat along their entire depth.

Top view of installation cut out



Planning examples for Vario cooling Expressive series



Side-by-side solution 1

R VF freezer / R VC refrigerator

Usability limitations:

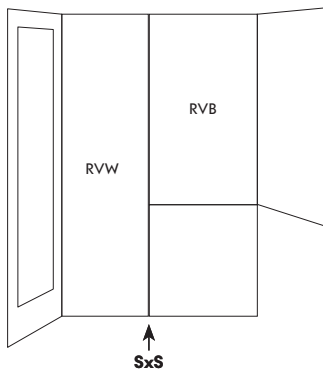
No limitation.

Installation accessories:

1x R VA 460 000 (SxS)*.

Notes:

Door hinges on the outside.



Side-by-side solution 2

R VW wine climate cabinet / R VB fridge-freezer combination

Usability limitations:

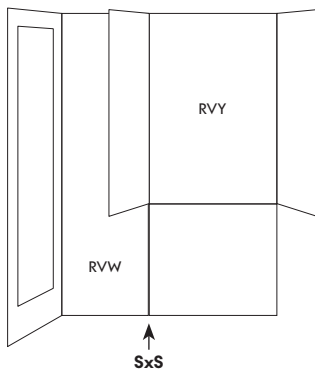
No limitation.

Installation accessories:

1x R VA 460 000 (SxS)*.

Notes:

Door hinges on the outside. Change door hinge of R VW with dedicated accessory. If using the dark brushed stainless steel door panels with a handle (installation accessories), select the correct panel for the intended hinge side of the R VW.



Side-by-side solution 3

R VW wine climate cabinet / R VY fridge-freezer combination

Usability limitations:

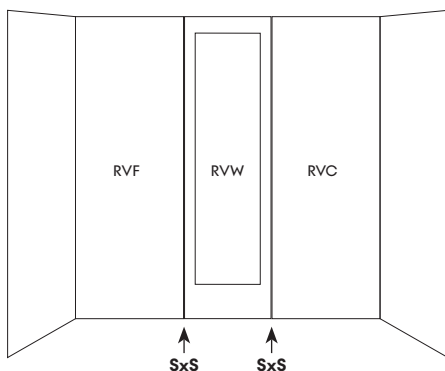
Not all doors can be opened at the same time. The left door of the R VY may collide with a handle if used for the R VW.

Installation accessories:

1x R VA 460 000 (SxS)*.

Notes:

Restricting the opening of the left door of the R VY to 90° is recommended. Change door hinge of the R VW with dedicated accessory. If using the dark brushed stainless steel door panels with a handle (installation accessories), select the correct panel for the intended hinge side of the R VW.



Combination of 3

R VF freezer / R VW wine climate cabinet / R VC refrigerator

Usability limitations:

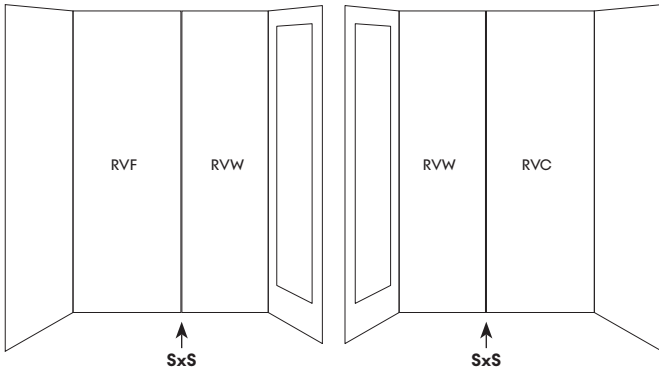
The doors of R VW and R VC cannot be opened at the same time, but one after another.

Installation accessories:

2x R VA 460 000 (SxS)*.

Notes:

All three appliances must be connected to each other before installation and pushed together into the installation cut out.



Maximum distance

RVF freezer / RVW wine climate cabinet / RVW wine climate cabinet / RVC refrigerator

Usability limitations:

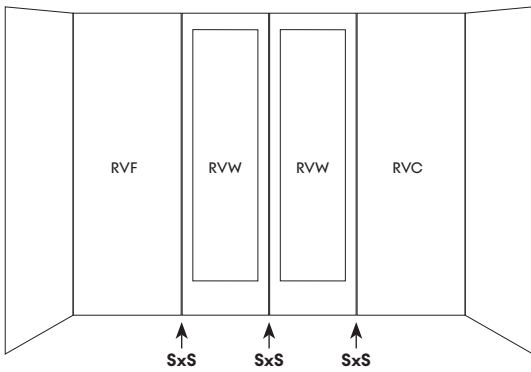
No limitation. All doors can be opened fully.

Installation accessories:

2x RVA 460 000 (SxS)*.

Notes:

Two separate installation cut outs. The clearance is large enough to open all doors at the same time. Change door hinge of the RVW with dedicated accessory. If using the dark brushed stainless steel door panels with a handle (installation accessories), select the correct panel for the intended hinge side of the RVW.



Combination of 4

RVF freezer / RVW wine climate cabinet / RVW wine climate cabinet / RVC refrigerator

Usability limitations:

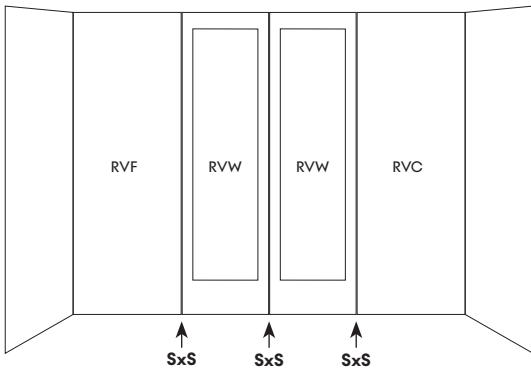
If the middle doors are open, then neither of the outer doors can be opened.

Installation accessories:

3x RVA 460 000 (SxS)*.

Notes:

The appliances in the middle are connected side-by-side. All four appliances must be connected to each other before installation and pushed together into the installation cut out. If using the dark brushed stainless steel door panels with handle (installation accessories), select the correct panel for the intended hinge side of the RVW.



Combination of 4 – alternative

RVF freezer / RVW wine climate cabinet / RVW wine climate cabinet / RVC refrigerator

Usability limitations:

The middle doors cannot be opened at the same time.

Installation accessories:

3x RVA 460 000 (SxS)*.

Notes:

The appliances in the middle are connected hinge-to-hinge. All four appliances must be connected to each other before installation and pushed together into the installation cut out. If using the dark brushed stainless steel door panels with handle (installation accessories), select the correct panel for the intended hinge side of the RVW.

*SxS Accessory for side-by-side installation.

All measurements in inches (mm).