



## VL 414 111

Stainless steel  
Width 4 5/16 (11 cm)  
Air extraction / Air recirculation  
Without blower and control knob  
(order separately)

### Required installation accessories

#### AA 490 711

Vario control knob for use with Vario 400 series downdraft ventilation.  
Stainless steel

For operation with one of the following 400 series blowers: AR400742 inline / AR401742 remote blower or AR413722 recirculation blower. For more details on the actual control knob, see page 166.

#### AD 724 041

Round duct connection additional adapter for VL 414 on the side  
Metal zinc coated  
Necessary for installation to left or right side of VL.

#### AD 724 042

Connection piece for 6" round pipe for VL 414  
For installation to left or right side of VL additional adapter AD 724 041 is necessary.

### Installation accessories

In combination of several Vario cooktops or VL 414 downdraft, connecting strips must be used. Choose respective VA 420 strip from one of the below, depending on type of installation.

#### VA 420 000

Connection strip for combination with other Vario 400 series appliances for **flush** mounting.

#### VA 420 010

Connection strip for combination with other Vario 400 series appliances for **surface** mounting.

### Optional accessories

#### AA 414 010

Air deflector for VL 414 next to gas appliance.

Installation accessories for the air recirculation ducts can be found starting on page 194.

## Vario 400 series downdraft ventilation VL 414

- Highly efficient ventilation system at cooktop
- Flexible power distribution, precise extraction of cooking vapors
- Can be perfectly combined with other Vario 400 series products
- Precision crafting of 3mm stainless steel
- For surface mounting with a visible edge or for flush mounting
- Without blower, can be combined with multiple 400 series AR blowers and one AA 490 control knob

### Output

Maximum air output in combination with 400 series AR inline / remote or recirculation blower. For CFM information, refer to blower overview on pages 206–207.

Noise level depends on the built-in situation.

### Features

Manual opening of the ventilation element.  
Closing element made of stainless steel, dishwasher-safe.  
Metal grease filter with grease drip tray, dishwasher-safe.

### Planning notes

Refer to the table on page 202 for the matching blowers for air recirculation or air extraction mode. Secure the control unit to the side panel of the cabinet, not to the base of the cabinet or the kitchen floor. For each VL one blower is recommended.

Maximum countertop width between two VL: 24" (60 cm).

Appliance can be snapped into the cooktop from above. Additional fixing by clamps accessible from bottom up, clamping range 1 3/16"-2"(30–50 mm). If combining several Vario appliances of the 400 series, a connection strip VA 420 must be placed between the appliances. Depending on the type of installation, the corresponding connection strip must be provided.

The weight bearing capacity and stability, in the case of thin countertops in particular, must be supported using suitable substructures. Take into account the appliance weight and additional loads. Additional instructions for flush mounting:

Installation is possible in countertops made of stone, synthetics or solid wood.

Heat resistance and watertight sealing of the cut edges must be observed.

Concerning other materials please consult the countertop manufacturer. The groove must be continuous and even, so that uniform placing of the appliance on the gasket is ensured. Do not use discontinuous lining.

The joint width may vary due to size tolerances of the combinations and of the countertop cut-out.

If installing several appliances individual cut-outs allow for a division bar of minimum 2" (50 mm) between the individual cut-outs.

If operated next to gas appliances, the air deflector AA 414 010 is

recommended to ensure maximum performance of the cooktop. No duct connection pieces are included, they must be ordered separately. Either AD724042 transition to 6" round duct to connect to bottom / left / right side of VL and AD724041 adapter piece if connecting duct to left or right side of VL downdraft.

Note: When connecting two or more VL downdrafts, it is recommended to have one blower per VL downdraft. Multiple blowers can be operated via one AA 490 control knob at the same speed level.

If a higher power requirement is needed for 1x VL 414 downdraft, a second blower can be added.

Please ensure when installing the exhaust air ducting that no sharp bendings are caused and that the cross-section of the ducting is not constricted in any way. This can have an impact on the blower performance. Appliance can be snapped into the countertop from above. Additional fixing by clamps that are accessible from the top, clamping range from 1 3/16" to 1 15/16".

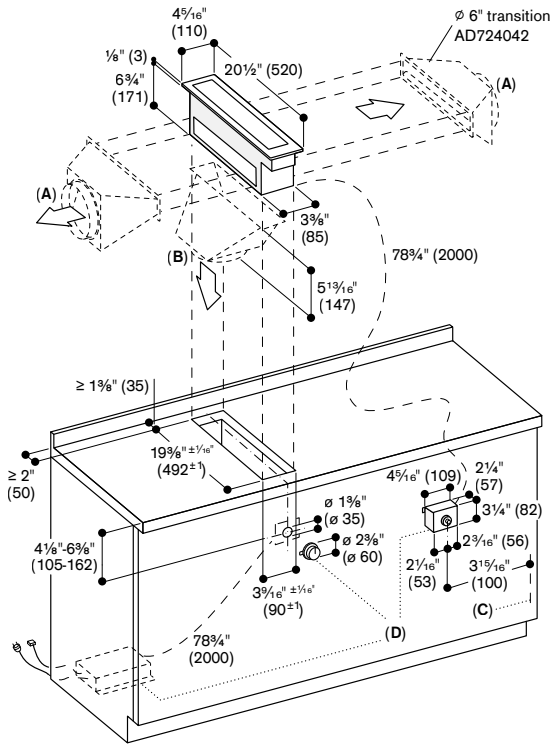
Please read additional planning notes on pages 168 – 169.

### Rating

60 Hz

Plan for a 79" connection cable between ventilation element VL 414 and control knob AA 490.

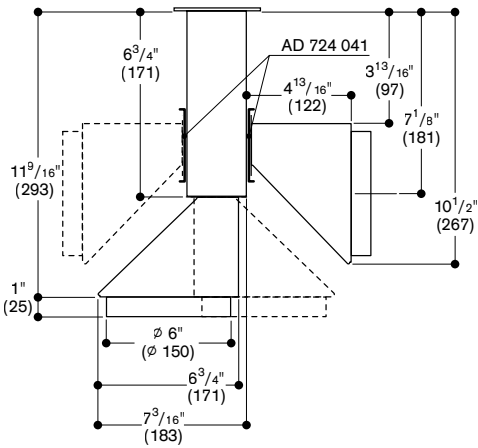
## Surface-mount Installation



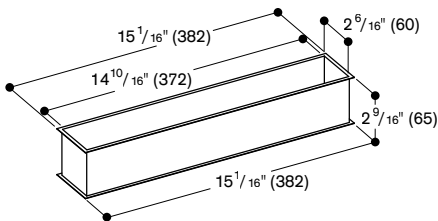
- A. DN 5 $\frac{7}{8}''$  (150) round duct pipe connection piece, left/right with AD 724 042 + AD724 041
- B. DN 5 $\frac{7}{8}''$  (150) round duct pipe connection piece, bottom with AD 724 042
- C. Cable access, right-hand side
- D. Vario control knob ventilation AA 490

See separate planning notes on page 105 for:  
- positioning of control knob; configuration for flexible power distribution.

## VL 414 with AD 724 042 /041

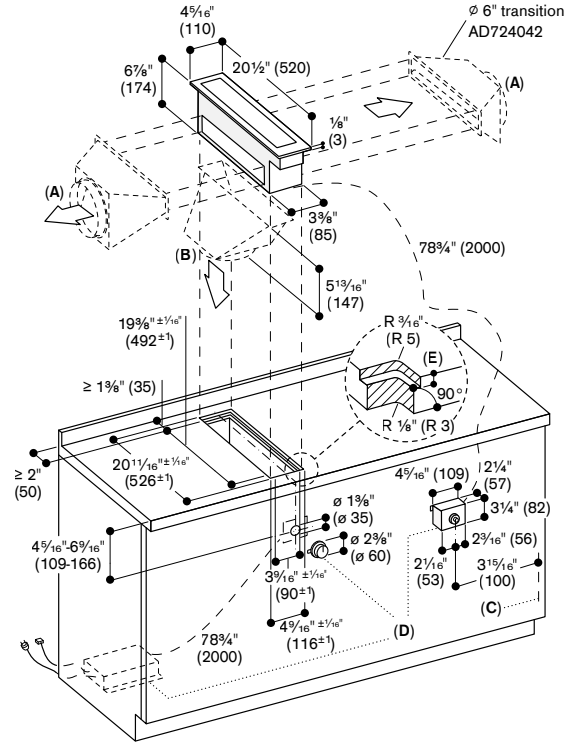


## AS 070 001 connection piece for extension



Numbers indicated  
inside parenthesis ( ) = mm

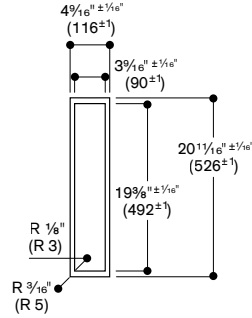
## Flush-mount Installation



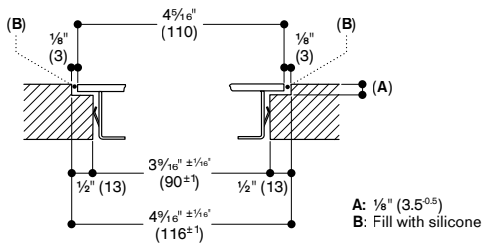
- A. DN 5 $\frac{7}{8}''$  (150) round duct pipe connection piece, left/right with AD 724 042 + AD724 041
- B. DN 5 $\frac{7}{8}''$  (150) round duct pipe connection piece, bottom with AD 724 042
- C. Cable access, right-hand side
- D. Vario control knob ventilation AA 490
- E.  $\frac{1}{8}''$  (3.5<sup>0.5</sup>)

See separate planning notes on page 105 for:  
- positioning of control knob; configuration for flexible power distribution.

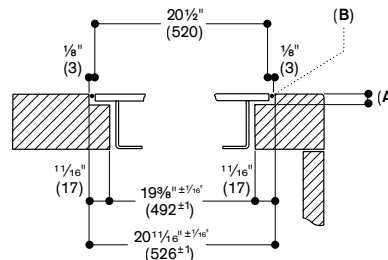
## View from above



## Longitudinal section



## Cross-section



- A:  $\frac{1}{8}''$  (3.5<sup>0.5</sup>)
- B: Fill with silicone