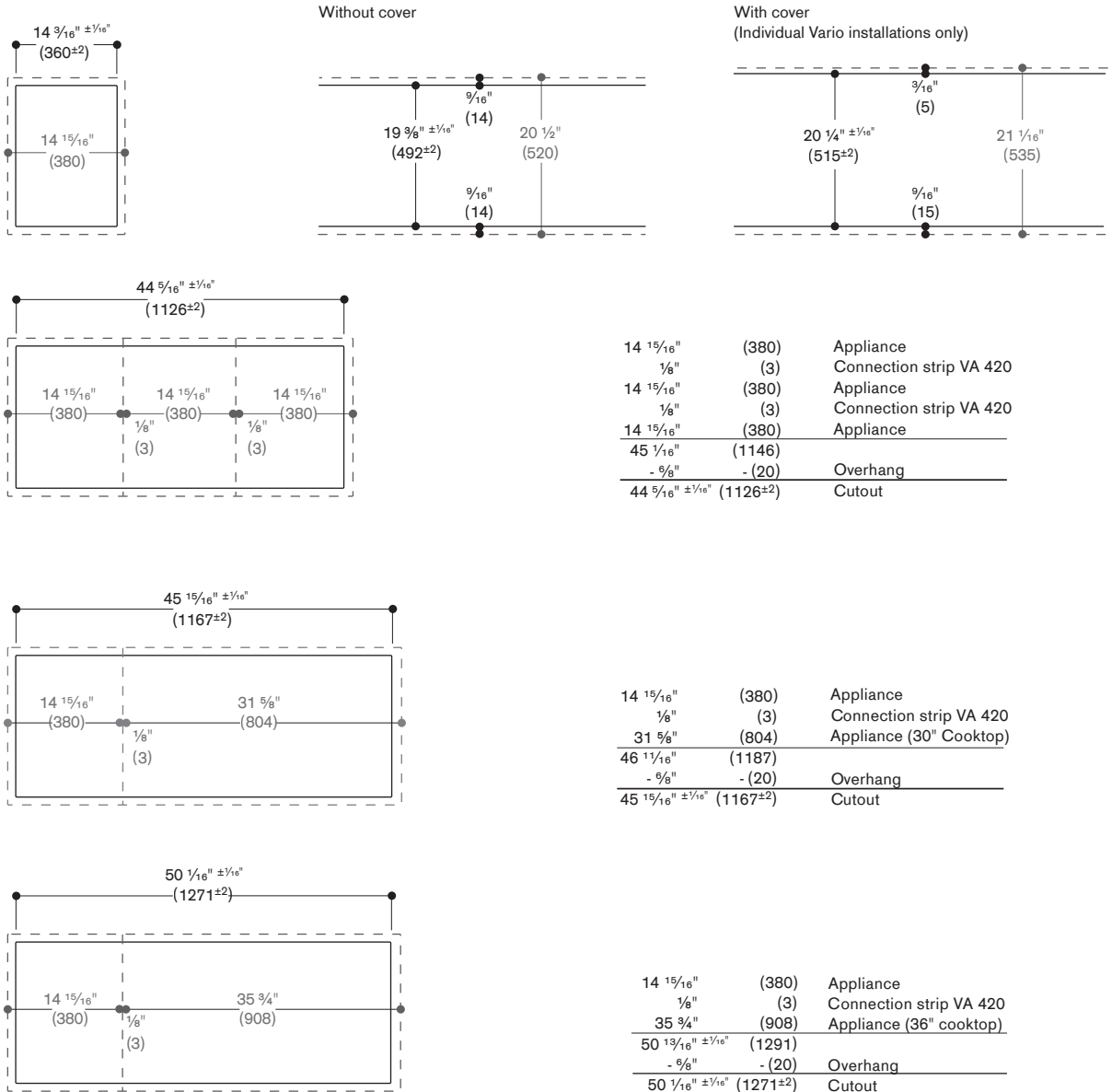


Cut-out dimensions for Vario 400 series combinations. **Surface-mount installation.**

The drawings listed below show the cut-out dimensions for Vario 400 series appliance combinations for a **surface mounting**. While taking into consideration the drawings specified below, the installer can define the suitable cut-out dimensions. The combinations listed here are only sample combinations.

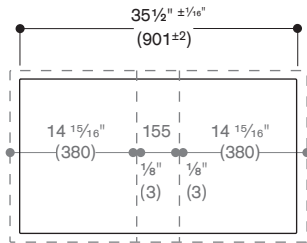
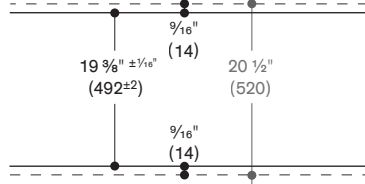
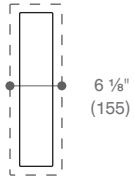
The connection strip VA 420 010 must be provided for surface mounting combinations.

Sample combinations without VL 414 ventilation element:

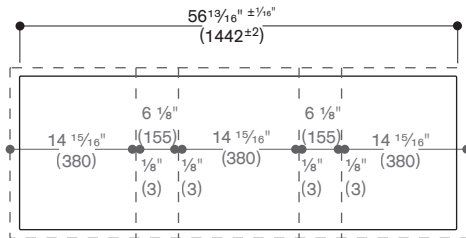


Sample combinations with VL 414 ventilation element:

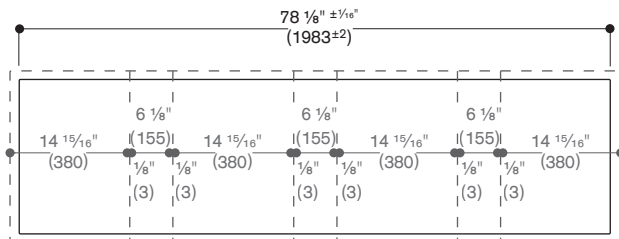
Without cover



14 15/16"	(380)	Appliance
1/8"	(3)	Connection strip VA 420
6 1/8"	(155)	VL 414
1/8"	(3)	Connection strip VA 420
14 15/16"	(380)	Appliance
<hr/>		
36 1/4"	(921)	
- 9/8"	-(20)	Overhang
<hr/>		
35 1/2" ±1/16"	(901±2)	Cutout



14 15/16"	(380)	Appliance
1/8"	(3)	Connection strip VA 420
6 1/8"	(155)	VL 414
1/8"	(3)	Connection strip VA 420
14 15/16"	(380)	Appliance
1/8"	(3)	Connection strip VA 420
6 1/8"	(155)	VL 414
1/8"	(3)	Connection strip VA 420
14 15/16"	(380)	Appliance
<hr/>		
57 9/16"	(1462)	
- 9/8"	-(20)	Overhang
<hr/>		
56 13/16" ±1/16"	(1442±2)	Cutout



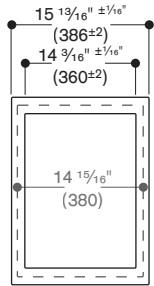
14 15/16"	(380)	Appliance
1/8"	(3)	Connection strip VA 420
6 1/8"	(155)	VL 414
1/8"	(3)	Connection strip VA 420
14 15/16"	(380)	Appliance
1/8"	(3)	Connection strip VA 420
6 1/8"	(155)	VL 414
1/8"	(3)	Connection strip VA 420
14 15/16"	(380)	Appliance
1/8"	(3)	Connection strip VA 420
6 1/8"	(155)	VL 414
1/8"	(3)	Connection strip VA 420
14 15/16"	(380)	Appliance
<hr/>		
78 7/8"	(2003)	
- 9/8"	-(20)	Overhang
<hr/>		
78 1/8" ±1/16"	(1983±2)	Cutout

Cut-out dimensions for Vario 400 series combinations. Flush installation.

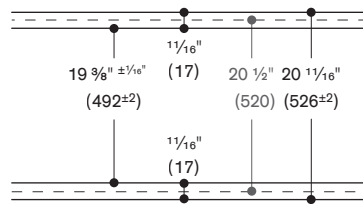
The drawings listed below show the cut-out dimensions for Vario 400 series appliance combinations for a flush mounting. While taking into consideration the drawings specified below, the installer can define the suitable cut-out dimensions. The combinations listed here are only sample combinations.

The connection strip VA 420 000 must be provided for flush mounted combinations.

Sample combinations without VL 414 ventilation element:

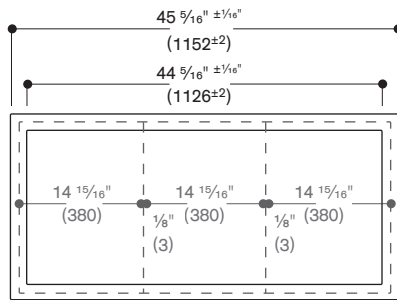
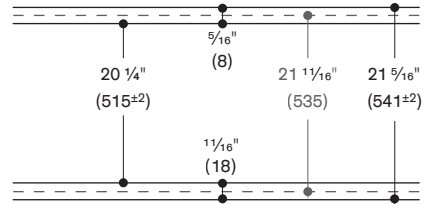


Without cover

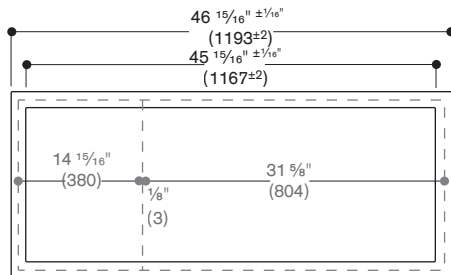


With cover

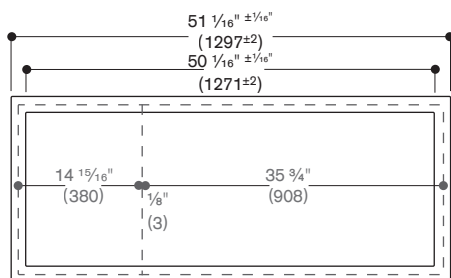
(Individual Vario installations only)



14 15/16"	(380)	Appliance
1/8"	(3)	Connection strip VA 420
14 15/16"	(380)	Appliance
1/8"	(3)	Connection strip VA 420
14 15/16"	(380)	Appliance
45 5/16"	(1146)	
- 9/8"	- (20)	Overhang
44 5/16" ± 1/16"	(1126±2)	Cutout
+ 9/8"	+ (20)	Overhang
+ 1/4"	+ (6)	Silicone joint
45 5/16" ± 1/16"	(1152±2)	Cutout with groove

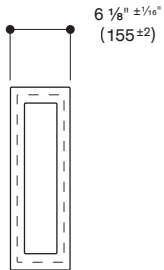


14 15/16"	(380)	Appliance
1/8"	(3)	Connection strip VA 420
31 5/8"	(804)	Appliance (30" Cooktop)
46 15/16"	(1187)	
- 9/8"	- (20)	Overhang
45 15/16" ± 1/16"	(1167±2)	Cutout
+ 9/8"	+ (20)	Overhang
+ 1/4"	+ (6)	Silicone joint
46 15/16" ± 1/16"	(1193±2)	Cutout with groove

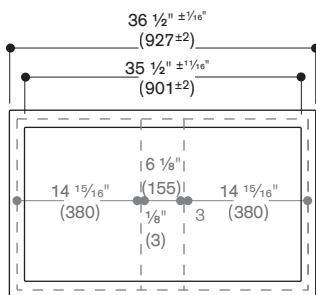
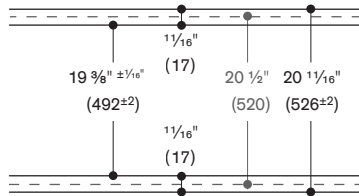


14 15/16"	(380)	Appliance
1/8"	(3)	Connection strip VA 420
35 3/4"	(908)	Appliance (36" cooktop)
50 19/16"	(1291)	
- 9/8"	- (20)	Overhang
50 1/16" ± 1/16"	(1271±2)	Cutout
+ 9/8"	+ (20)	Overhang
+ 1/4"	+ (6)	Silicone joint
51 1/16" ± 1/16"	(1297±2)	Cutout with groove

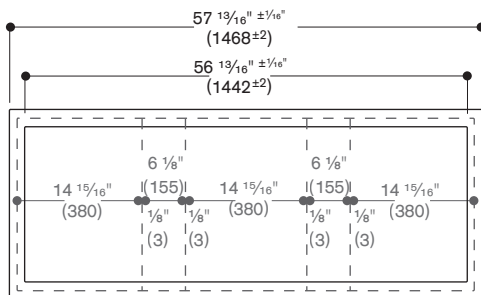
Sample combinations with VL 414 downdraft unit:



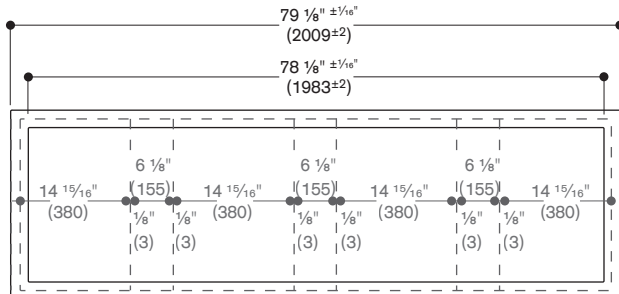
Without cover



14 15/16"	(380)	Appliance
1/8"	(3)	Connection strip VA 420
6 1/8"	(155)	VL 414
1/8"	(3)	Connection strip VA 420
14 15/16"	(380)	Appliance
36 1/4"	(921)	
- 9/8"	- (20)	Overhang
35 1/2" ±1/16"	(901±2)	Cutout
+ 3/4"	+ (20)	Overhang
+ 1/4"	+ (6)	Silicone joint
36 1/2" ±1/16"	(927±2)	Cutout with groove



14 15/16"	(380)	Appliance
1/8"	(3)	Connection strip VA 420
6 1/8"	(155)	VL 414
1/8"	(3)	Connection strip VA 420
14 15/16"	(380)	Appliance
1/8"	(3)	Connection strip VA 420
6 1/8"	(155)	VL 414
1/8"	(3)	Connection strip VA 420
14 15/16"	(380)	Appliance
57 9/16"	(1462)	
- 9/8"	- (20)	Overhang
56 13/16" ±1/16"	(1442±2)	Cutout
+ 3/4"	+ (20)	Overhang
+ 1/4"	+ (6)	Silicone joint
57 13/16" ±1/16"	(1468±2)	Cutout with groove

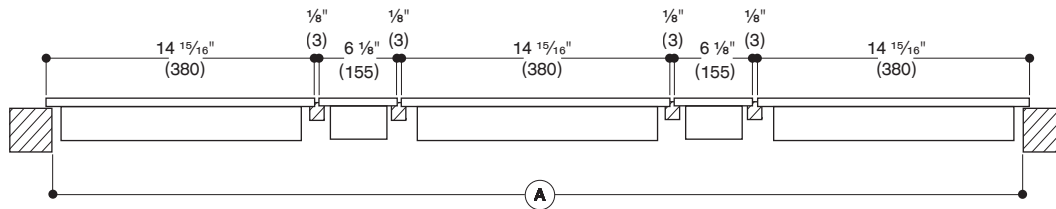


14 15/16"	(380)	Appliance
1/8"	(3)	Connection strip VA 420
6 1/8"	(155)	VL 414
1/8"	(3)	Connection strip VA 420
14 15/16"	(380)	Appliance
1/8"	(3)	Connection strip VA 420
6 1/8"	(155)	VL 414
1/8"	(3)	Connection strip VA 420
14 15/16"	(380)	Appliance
1/8"	(3)	Connection strip VA 420
6 1/8"	(155)	VL 414
1/8"	(3)	Connection strip VA 420
14 15/16"	(380)	Appliance
78 7/8"	(2003)	
- 9/8"	- (20)	Overhang
78 1/8" ±1/16"	(1983±2)	Cutout
+ 9/8"	+ (20)	Overhang
+ 1/4"	+ (6)	Silicone joint
79 1/8" ±1/16"	(2009±2)	Cutout with groove

Cut-out dimensions for Vario 400 series combinations. Calculating tool for the cut-out width.

Calculation of the width of the cut-out for a surface mounting

Example using a combination of VI 414, VI 422, VP 414 and 2 VL 414.

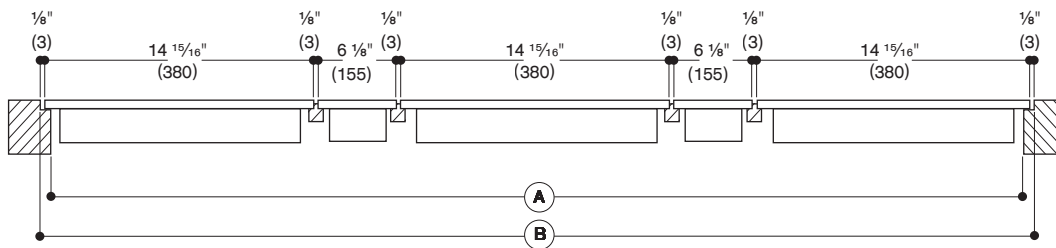


		Example	Your combination	
Total width of all appliances	in inches (mm)	$(3 \times 14 \frac{15}{16}'' (380)) + (2 \times 6 \frac{1}{8}'' (155))$	57 $\frac{1}{16}''$ (1,450)
+ Number of connection strips	$x \frac{1}{8}'' (3)$	4 $x \frac{1}{8}'' (3)$	+ $\frac{1}{2}''$ (12)
- Lateral appliance overhang	$(\frac{9}{16}'' (10) / \text{side})$	$\frac{9}{16}'' (20)$	- $\frac{9}{16}''$ (20)	- $\frac{9}{16}'' (20)$
(A) Total cut-out width	(in inches (mm))		56 $\frac{13}{16}'' \pm \frac{1}{16}''$ (1,442 \pm 2) $\pm \frac{1}{16}'' (\pm 2)$

Cut-out depth based on the installation situation with or without appliance cover/filler strip.

Calculation of the width of the cut-out for a flush mounting

Example using a combination of VI 414, VI 422, VP 414 and 2 VL 414.



		Example	Your combination	
Total width of all appliances	in inches (mm)	$(3 \times 14 \frac{15}{16}'' (380)) + (2 \times 6 \frac{1}{8}'' (155))$	57 $\frac{1}{16}''$ (1,450)
+ Number of connection strips	$x \frac{1}{8}'' (3)$	4 $x \frac{1}{8}'' (3)$	+ $\frac{1}{2}''$ (12)
- Lateral appliance overhang	$(\frac{9}{16}'' (10) / \text{side})$	$\frac{9}{16}'' (20)$	- $\frac{9}{16}''$ (20)	- $\frac{9}{16}'' (20)$
(A) Total cut-out width	(in inches (mm))		56 $\frac{13}{16}'' \pm \frac{1}{16}''$ (1,442 \pm 2) $\pm \frac{1}{16}'' (\pm 2)$
+ Lateral appliance overhang	$(\frac{9}{16}'' (10) / \text{side})$	$\frac{9}{16}'' (20)$	+ $\frac{9}{16}''$ (20)	- $\frac{9}{16}'' (20)$
+ Silicone joint ($\frac{1}{8}'' (3)$ circumference)		2 $x \frac{1}{8}'' (3)$	+ $\frac{1}{4}''$ (6)	+ $\frac{1}{4}'' (6)$
(B) Total width with groove	in inches (mm)		57 $\frac{13}{16}'' \pm \frac{1}{16}''$ (1,468 \pm 2) $\pm \frac{1}{16}'' (\pm 2)$

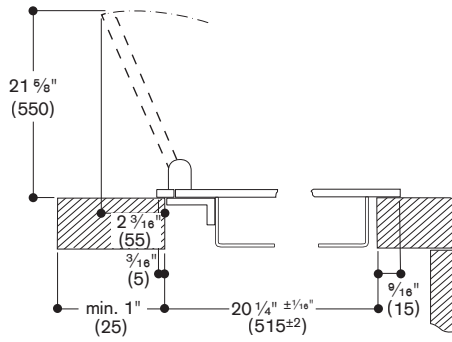
Cut-out depth based on the installation situation with or without appliance cover/filler strip.

Installation with appliance cover for Vario 400 series

Stainless steel appliance cover is only available for individual Vario installations. Covers cannot be used when installing multiple Varios in a single cutout or when combined with downdraft.

If installing with the VA 440 appliance cover, take into account the additional space required for the depth. Furthermore, you must ensure that there is an asymmetrical alignment in the cut-out depth.

Installation with appliance cover surface-mount installation



Installation with appliance cover flush installation

