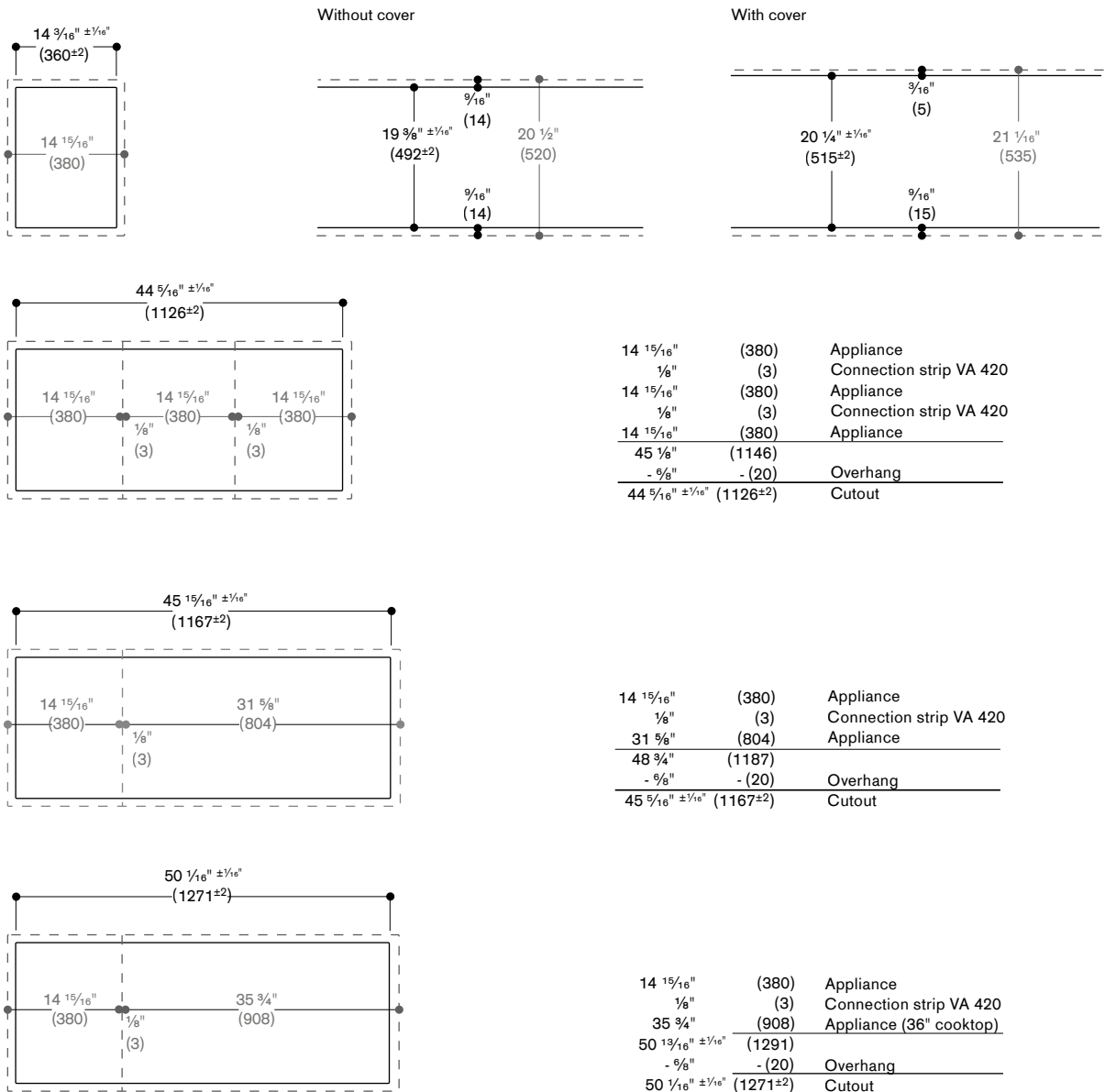


# Cut-out dimensions for Vario 400 series combinations. **Surface-mount installation.**

The drawings listed below show the cut-out dimensions for Vario 400 series appliance combinations for a **surface mounting**. While taking into consideration the previous page and the drawings specified below, the installer can define the suitable cut-out dimensions. The combinations listed here are only sample combinations.

The connection strip VA 420 010 must be provided for surface mounting combinations.

## Sample combinations without VL 414 ventilation element:



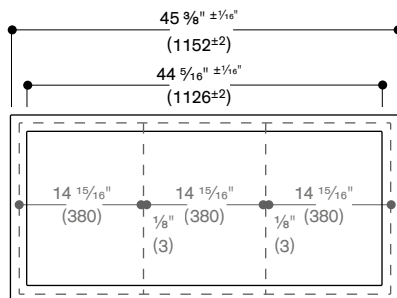
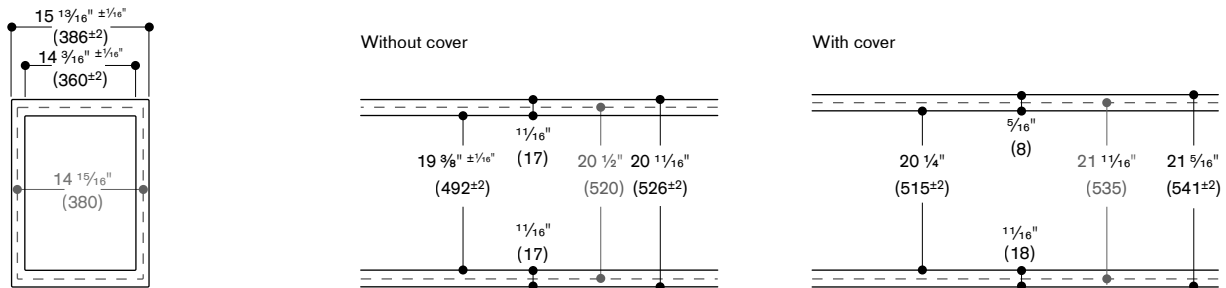
## Cut-out dimensions for Vario 400 series combinations. Flush installation.

The drawings listed below show the cut-out dimensions for Vario 400 series appliance combinations for a flush mounting. While taking into consideration the previous page and the drawings specified below, the installer can define the suitable cut-out dimensions. The combinations listed here are only sample combinations.

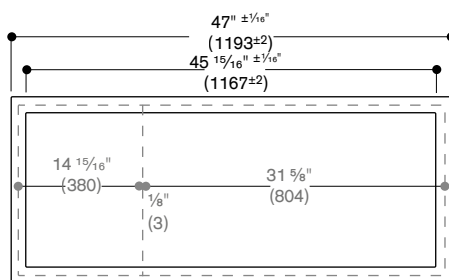
The connection strip VA 420 000 must be provided for flush mounted combinations.

If installing with the VA 440 appliance cover or VA 450 filler strip, take into account the additional space required for the depth. Furthermore, you must ensure that there is an asymmetrical alignment in the cut-out depth.

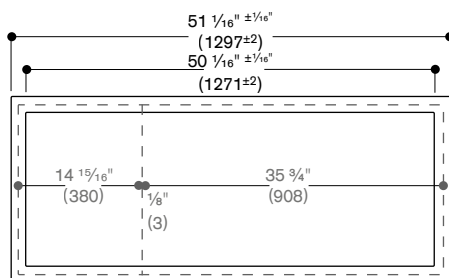
### Sample combinations without VL 414 ventilation element:



$14 \frac{15}{16}''$	(380)	Appliance
$\frac{1}{8}''$	(3)	Connection strip VA 420
$14 \frac{15}{16}''$	(380)	Appliance
$\frac{1}{8}''$	(3)	Connection strip VA 420
$14 \frac{15}{16}''$	(380)	Appliance
$45 \frac{1}{16}''$	(1146)	
$-\frac{9}{16}''$	-(20)	Overhang
$44 \frac{5}{16}'' \pm \frac{1}{16}''$	(1126±2)	Cutout
$+\frac{9}{16}''$	+(20)	Overhang
$+\frac{1}{4}''$	+(6)	Silicone joint
$45 \frac{3}{8}'' \pm \frac{1}{16}''$	(1152±2)	Cutout with groove



$14 \frac{15}{16}''$	(380)	Appliance
$\frac{1}{8}''$	(3)	Connection strip VA 420
$31 \frac{5}{8}''$	(804)	Appliance
$46 \frac{3}{4}''$	(1187)	
$-\frac{9}{16}''$	-(20)	Overhang
$45 \frac{15}{16}'' \pm \frac{1}{16}''$	(1167±2)	Cutout
$+\frac{9}{16}''$	+(20)	Overhang
$+\frac{1}{4}''$	+(6)	Silicone joint
$47'' \pm \frac{1}{16}''$	(1193±2)	Cutout with groove

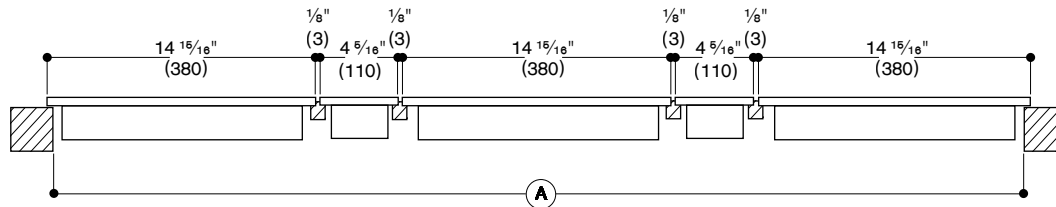


$14 \frac{15}{16}''$	(380)	Appliance
$\frac{1}{8}''$	(3)	Connection strip VA 420
$35 \frac{3}{4}''$	(908)	Appliance (36" cooktop)
$50 \frac{1}{16}''$	(1291)	
$-\frac{9}{16}''$	-(20)	Overhang
$50 \frac{1}{16}'' \pm \frac{1}{16}''$	(1271±2)	Cutout
$+\frac{9}{16}''$	+(20)	Overhang
$+\frac{1}{4}''$	+(6)	Silicone joint
$51 \frac{1}{16}'' \pm \frac{1}{16}''$	(1297±2)	Cutout with groove

## Cut-out dimensions for Vario 400 series combinations. Calculating tool for the cut-out width.

### Calculation of the width of the cut-out for a surface mounting

Example using a combination of VI 414, VI 422, VP 414 and 2 VL 414.

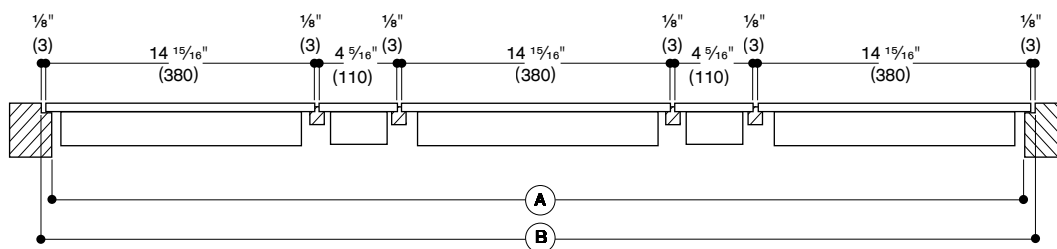


		Example		Your combination
Total width of all appliances	in inches (mm)	$(3 \times 14 \frac{15}{16}'' (380)) + (2 \times 4 \frac{5}{16}'' (110))$	$53 \frac{9}{16}'' (1,360)$	.....
+ Number of connection strips	$x \frac{1}{8}'' (3)$	$4 \times \frac{1}{8}'' (3)$	$+ \frac{1}{2}'' (12)$	.....
- Lateral appliance overhang	$(\frac{9}{16}'' (10) / \text{side})$	$\frac{9}{16}'' (20)$	$- \frac{9}{16}'' (20)$	$- \frac{9}{16}'' (20)$
(A) Total cut-out width	(in inches (mm))		$53 \frac{1}{4}'' \pm \frac{1}{16}'' (1,352 \pm 2)$	..... $\pm \frac{1}{16}'' (\pm 2)$

Cut-out depth based on the installation situation with or without appliance cover/filler strip.

### Calculation of the width of the cut-out for a flush mounting

Example using a combination of VI 414, VI 422, VP 414 and 2 VL 414.



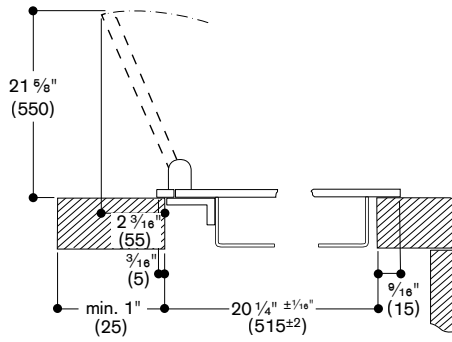
		Example		Your combination
Total width of all appliances	in inches (mm)	$(3 \times 14 \frac{15}{16}'' (380)) + (2 \times 4 \frac{5}{16}'' (110))$	$53 \frac{9}{16}'' (1,360)$	.....
+ Number of connection strips	$x \frac{1}{8}'' (3)$	$4 \times \frac{1}{8}'' (3)$	$+ \frac{1}{2}'' (12)$	.....
- Lateral appliance overhang	$(\frac{9}{16}'' (10) / \text{side})$	$\frac{9}{16}'' (20)$	$- \frac{9}{16}'' (20)$	$- \frac{9}{16}'' (20)$
(A) Total cut-out width	(in inches (mm))		$53 \frac{1}{4}'' \pm \frac{1}{16}'' (1,352 \pm 2)$	..... $\pm \frac{1}{16}'' (\pm 2)$
+ Lateral appliance overhang	$(\frac{9}{16}'' (10) / \text{side})$	$\frac{9}{16}'' (20)$	$+ \frac{9}{16}'' (20)$	$- \frac{9}{16}'' (20)$
+ Silicone joint ( $\frac{1}{8}'' (3)$ circumference)		$2 \times \frac{1}{8}'' (3)$	$+ \frac{1}{4}'' (6)$	$+ \frac{1}{4}'' (6)$
(B) Total width with groove	in inches (mm)		$54 \frac{1}{4}'' \pm \frac{1}{16}'' (1,378 \pm 2)$	..... $\pm \frac{1}{16}'' (\pm 2)$

Cut-out depth based on the installation situation with or without appliance cover/filler strip.

## Installation with appliance cover for Vario 400 series

If installing with the VA 440 appliance cover, take into account the additional space required for the depth. Furthermore, you must ensure that there is an asymmetrical alignment in the cut-out depth.

### Installation with appliance cover surface-mount installation



### Installation with appliance cover flush installation

