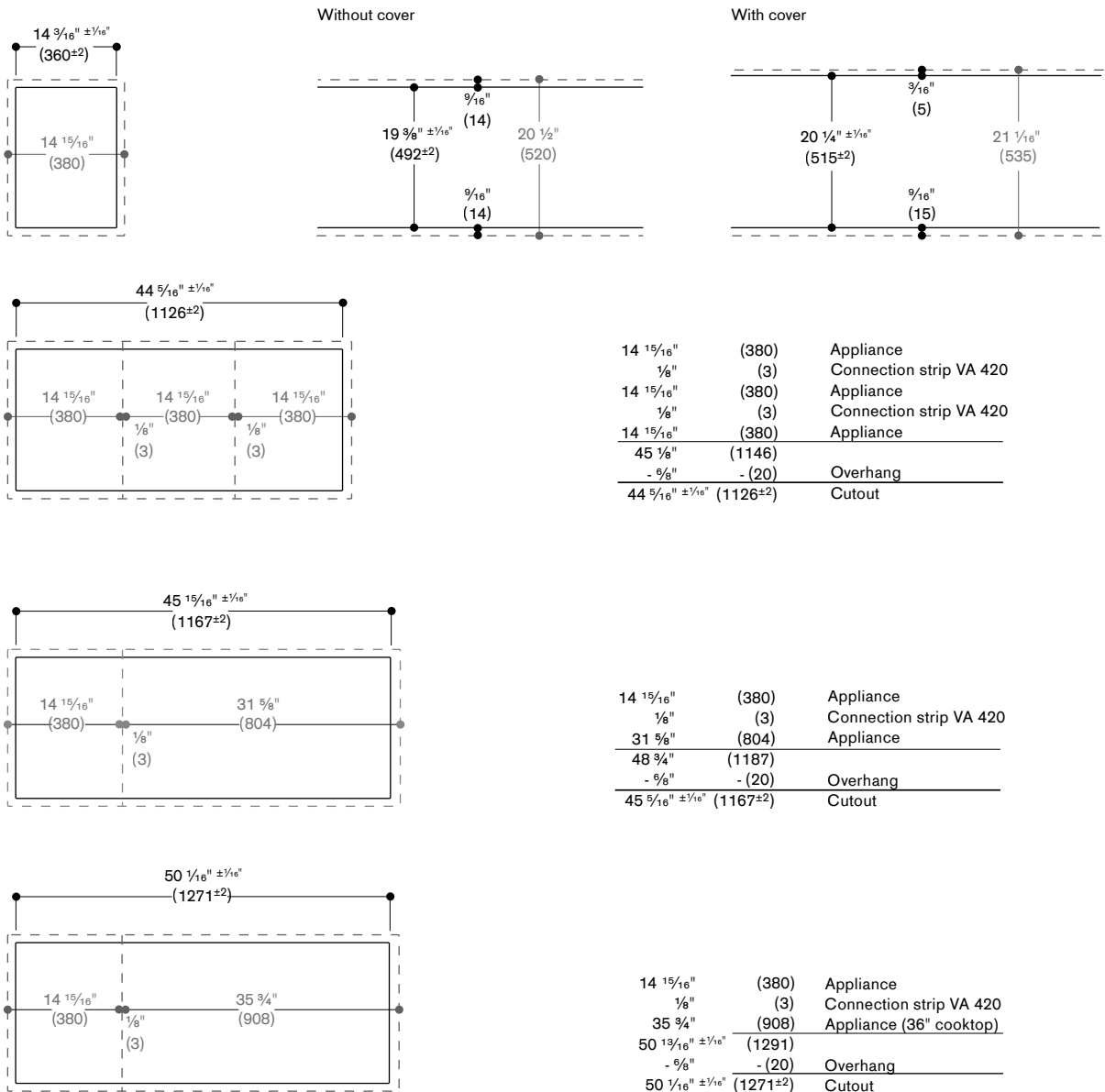


Cut-out dimensions for Vario 400 series combinations. **Surface-mount installation.**

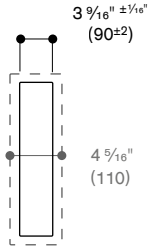
The drawings listed below show the cut-out dimensions for Vario 400 series appliance combinations for a **surface mounting**. While taking into consideration the previous page and the drawings specified below, the installer can define the suitable cut-out dimensions. The combinations listed here are only sample combinations.

The connection strip VA 420 010 must be provided for surface mounting combinations.

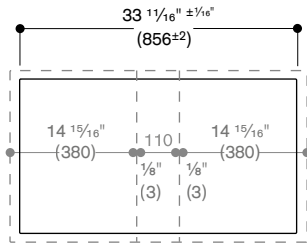
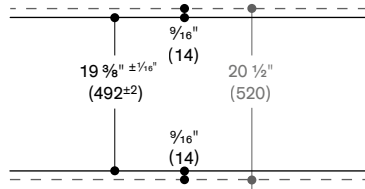
Sample combinations without VL 414 ventilation element:



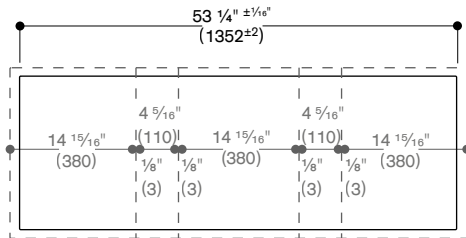
Sample combinations with VL 414 ventilation element:



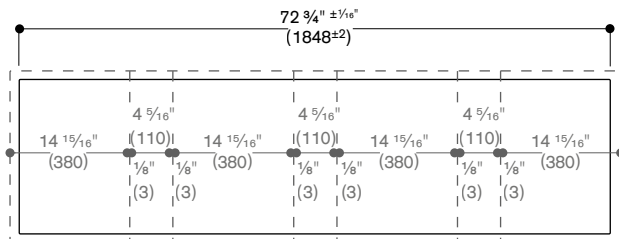
Without cover



14 15/16"	(380)	Appliance
1/8"	(3)	Connection strip VA 420
4 5/16"	(110)	VL 414
1/8"	(3)	Connection strip VA 420
14 15/16"	(380)	Appliance
37 1/2"	(876)	
- 9/8"	-(20)	Overhang
33 1/16" ± 1/16"	(856±2)	Cutout



14 15/16"	(380)	Appliance
1/8"	(3)	Connection strip VA 420
4 5/16"	(110)	VL 414
1/8"	(3)	Connection strip VA 420
14 15/16"	(380)	Appliance
1/8"	(3)	Connection strip VA 420
4 5/16"	(110)	VL 414
1/8"	(3)	Connection strip VA 420
14 15/16"	(380)	Appliance
54"	(1372)	
- 9/8"	-(20)	Overhang
53 1/4" ± 1/16"	(1352±2)	Cutout



14 15/16"	(380)	Appliance
1/8"	(3)	Connection strip VA 420
4 5/16"	(110)	VL 414
1/8"	(3)	Connection strip VA 420
14 15/16"	(380)	Appliance
1/8"	(3)	Connection strip VA 420
4 5/16"	(110)	VL 414
1/8"	(3)	Connection strip VA 420
14 15/16"	(380)	Appliance
1/8"	(3)	Connection strip VA 420
4 5/16"	(110)	VL 414
1/8"	(3)	Connection strip VA 420
14 15/16"	(380)	Appliance
73 9/16"	(1868)	
- 9/8"	-(20)	Overhang
72 3/4" ± 1/16"	(1848±2)	Cutout

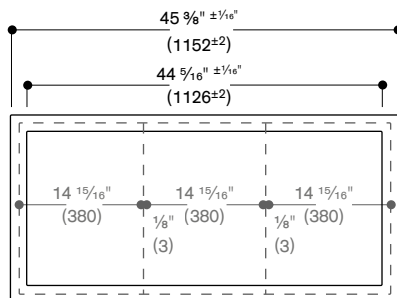
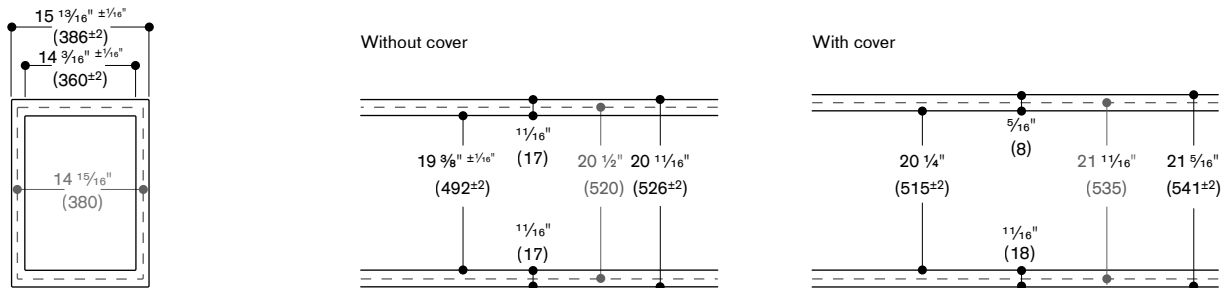
Cut-out dimensions for Vario 400 series combinations. Flush installation.

The drawings listed below show the cut-out dimensions for Vario 400 series appliance combinations for a flush mounting. While taking into consideration the previous page and the drawings specified below, the installer can define the suitable cut-out dimensions. The combinations listed here are only sample combinations.

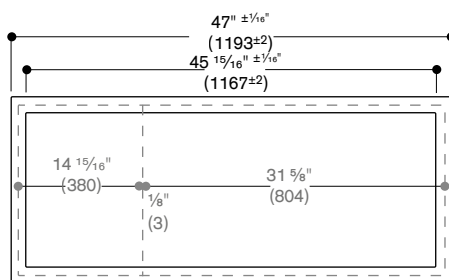
The connection strip VA 420 000 must be provided for flush mounted combinations.

If installing with the VA 440 appliance cover or VA 450 filler strip, take into account the additional space required for the depth. Furthermore, you must ensure that there is an asymmetrical alignment in the cut-out depth.

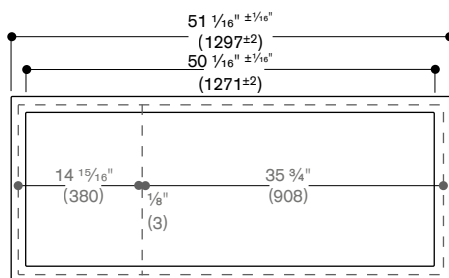
Sample combinations without VL 414 ventilation element:



14 15/16"	(380)	Appliance
1/8"	(3)	Connection strip VA 420
14 15/16"	(380)	Appliance
1/8"	(3)	Connection strip VA 420
14 15/16"	(380)	Appliance
45 1/8"	(1146)	
- 9/8"	- (20)	Overhang
44 5/16" ± 1/16"	(1126±2)	Cutout
+ 9/8"	+ (20)	Overhang
+ 1/4"	+ (6)	Silicone joint
45 5/8" ± 1/16"	(1152±2)	Cutout with groove

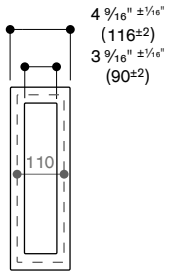


14 15/16"	(380)	Appliance
1/8"	(3)	Connection strip VA 420
31 5/8"	(804)	Appliance
46 3/4"	(1187)	
- 9/8"	- (20)	Overhang
45 15/16" ± 1/16"	(1167±2)	Cutout
+ 9/8"	+ (20)	Overhang
+ 1/4"	+ (6)	Silicone joint
47" ± 1/16"	(1193±2)	Cutout with groove

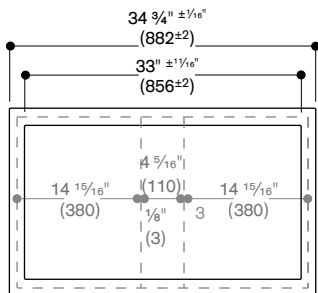
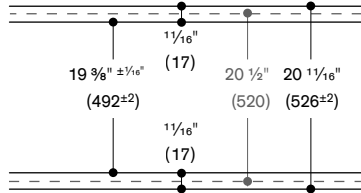


14 15/16"	(380)	Appliance
1/8"	(3)	Connection strip VA 420
35 3/4"	(908)	Appliance (36" cooktop)
50 1/16"	(1291)	
- 9/8"	- (20)	Overhang
50 1/16" ± 1/16"	(1271±2)	Cutout
+ 9/8"	+ (20)	Overhang
+ 1/4"	+ (6)	Silicone joint
51 1/16" ± 1/16"	(1297±2)	Cutout with groove

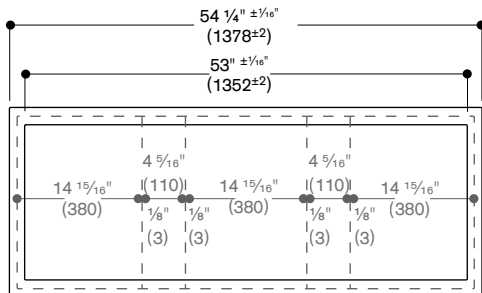
Sample combinations with VL 414 downdraft unit:



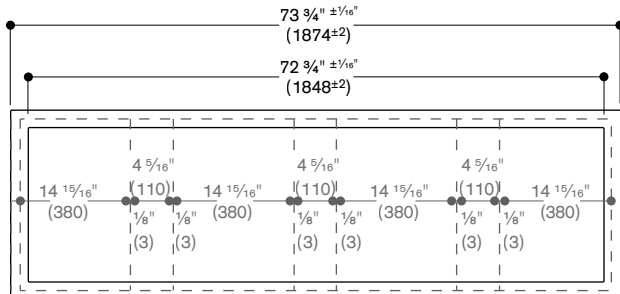
Without cover



14 15/16"	(380)	Appliance
1/8"	(3)	Connection strip VA 420
4 5/16"	(110)	VL 414
1/8"	(3)	Connection strip VA 420
14 15/16"	(380)	Appliance
<hr/>		
34 1/2"	(876)	
- 9/8"	- (20)	Overhang
<hr/>		
33" ± 1/16"	(856±2)	Cutout
+ 3/4"	+ (20)	Overhang
+ 1/4"	+(6)	Silicone joint
<hr/>		
34 3/4" ± 1/16"	(882±2)	Cutout with groove



14 15/16"	(380)	Appliance
1/8"	(3)	Connection strip VA 420
4 5/16"	(110)	VL 414
1/8"	(3)	Connection strip VA 420
14 15/16"	(380)	Appliance
1/8"	(3)	Connection strip VA 420
4 5/16"	(110)	VL 414
1/8"	(3)	Connection strip VA 420
14 15/16"	(380)	Appliance
<hr/>		
54"	(1372)	
- 9/8"	- (20)	Overhang
<hr/>		
53 1/4" ± 1/16"	(1352±2)	Cutout
+ 3/4"	+ (20)	Overhang
+ 1/4"	+(6)	Silicone joint
<hr/>		
54 1/4" ± 1/16"	(1378±2)	Cutout with groove

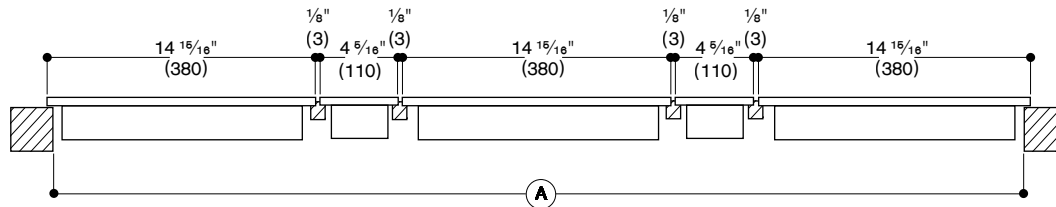


14 15/16"	(380)	Appliance
1/8"	(3)	Connection strip VA 420
4 5/16"	(110)	VL 414
1/8"	(3)	Connection strip VA 420
14 15/16"	(380)	Appliance
1/8"	(3)	Connection strip VA 420
4 5/16"	(110)	VL 414
1/8"	(3)	Connection strip VA 420
14 15/16"	(380)	Appliance
1/8"	(3)	Connection strip VA 420
4 5/16"	(110)	VL 414
1/8"	(3)	Connection strip VA 420
14 15/16"	(380)	Appliance
<hr/>		
73 3/4"	(1868)	
- 9/8"	- (20)	Overhang
<hr/>		
72 3/4" ± 1/16"	(1848±2)	Cutout
+ 9/8"	+ (20)	Overhang
+ 1/4"	+(6)	Silicone joint
<hr/>		
73 3/4" ± 1/16"	(1874±2)	Cutout with groove

Cut-out dimensions for Vario 400 series combinations. Calculating tool for the cut-out width.

Calculation of the width of the cut-out for a surface mounting

Example using a combination of VI 414, VI 422, VP 414 and 2 VL 414.

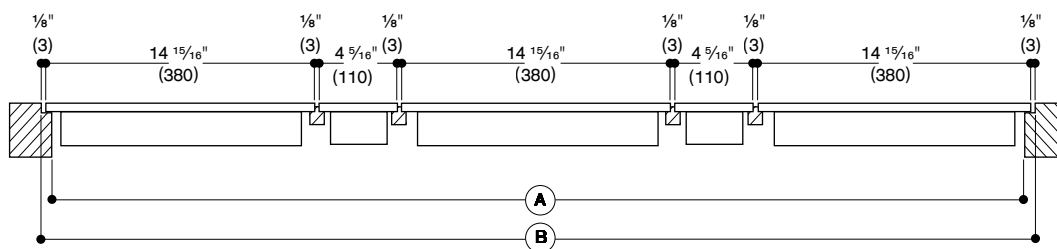


		Example	Your combination	
Total width of all appliances	in inches (mm)	$(3 \times 14 \frac{15}{16}'' (380)) + (2 \times 4 \frac{5}{16}'' (110))$	$53 \frac{9}{16}''$	$(1,360)$
+ Number of connection strips	$x \frac{1}{8}'' (3)$	$4 \times \frac{1}{8}'' (3)$	$+ \frac{1}{2}''$	(12)
- Lateral appliance overhang	$(\frac{9}{16}'' (10) / \text{side})$	$\frac{9}{16}'' (20)$	$- \frac{9}{16}''$	(20) $- \frac{9}{16}'' (20)$
(A) Total cut-out width	(in inches (mm))		$53 \frac{1}{4}'' \pm \frac{1}{16}''$	$(1,352 \pm 2)$ $\pm \frac{1}{16}'' (\pm 2)$

Cut-out depth based on the installation situation with or without appliance cover/filler strip.

Calculation of the width of the cut-out for a flush mounting

Example using a combination of VI 414, VI 422, VP 414 and 2 VL 414.



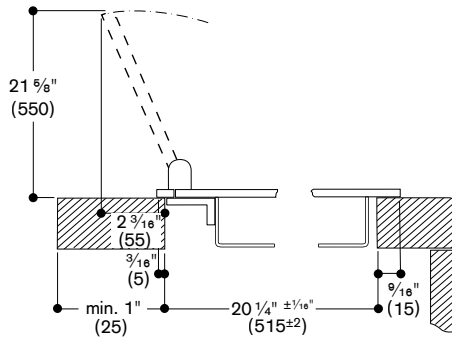
		Example	Your combination	
Total width of all appliances	in inches (mm)	$(3 \times 14 \frac{15}{16}'' (380)) + (2 \times 4 \frac{5}{16}'' (110))$	$53 \frac{9}{16}''$	$(1,360)$
+ Number of connection strips	$x \frac{1}{8}'' (3)$	$4 \times \frac{1}{8}'' (3)$	$+ \frac{1}{2}''$	(12)
- Lateral appliance overhang	$(\frac{9}{16}'' (10) / \text{side})$	$\frac{9}{16}'' (20)$	$- \frac{9}{16}''$	(20) $- \frac{9}{16}'' (20)$
(A) Total cut-out width	(in inches (mm))		$53 \frac{1}{4}'' \pm \frac{1}{16}''$	$(1,352 \pm 2)$ $\pm \frac{1}{16}'' (\pm 2)$
+ Lateral appliance overhang	$(\frac{9}{16}'' (10) / \text{side})$	$\frac{9}{16}'' (20)$	$+ \frac{9}{16}''$	(20) $- \frac{9}{16}'' (20)$
+ Silicone joint ($\frac{1}{8}'' (3)$ circumference)		$2 \times \frac{1}{8}'' (3)$	$+ \frac{1}{4}''$	(6) $+ \frac{1}{4}'' (6)$
(B) Total width with groove	in inches (mm)		$54 \frac{1}{4}'' \pm \frac{1}{16}''$	$(1,378 \pm 2)$ $\pm \frac{1}{16}'' (\pm 2)$

Cut-out depth based on the installation situation with or without appliance cover/filler strip.

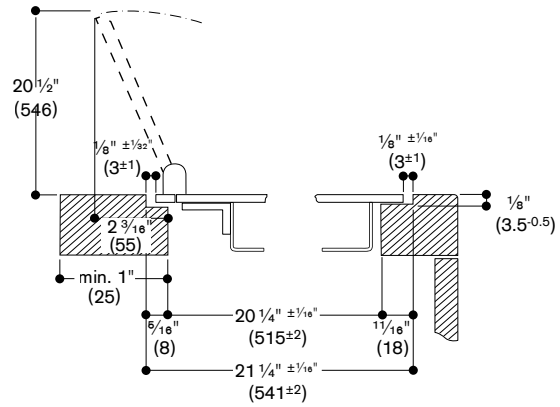
Installation with appliance cover for Vario 400 series

If installing with the VA 440 appliance cover, take into account the additional space required for the depth. Furthermore, you must ensure that there is an asymmetrical alignment in the cut-out depth.

Installation with appliance cover surface-mount installation



Installation with appliance cover flush installation



Installation notes for induction cooktops

Applies to CI 282/292, CX 492/482, and VI 263/414/422/492

Intake air ducting
 Induction cooktops have a cooling fan to protect the appliance's electronics from overheating. In the case of insufficient air circulation in the cabinet, the appliance's output will be reduced to prevent electronic damage.

A Air duct behind a cabinet or built-in oven
 An open cross-section of a minimum of $1\frac{3}{16}$ " is needed across the full width and full height of the cabinet. Cabinets with a closed bottom also need a respective cross-section in the air duct area.

B Air intake through the cabinet's back wall:
 In the cabinet's back wall, plan a recess of at least $1\frac{3}{4}$ " in height from the countertop's bottom line.

The minimum width is

- $21\frac{5}{8}$ " for the Vario 200 VI 263, Vario 400 VI 414/422 induction cooktop or the CI 282/CX 482
- $32\frac{5}{16}$ " for the CI 292/CX 492 induction cooktop

Exhaust air ducting with intermediate shelf:
 To prevent the content of drawers underneath the cooktop from heating up, the use of an intermediate shelf is recommended, except for 36" cooktops.

Width of cut-out at least

- $3\frac{15}{16}$ " for a 24" or 30" induction cooktop

* Does not apply to 36" cooktops
 ** Min. $2\frac{9}{16}$ " for cooktops with a frame and min. $2\frac{3}{4}$ " for cooktops without a frame.

Cut-out width needs to be at least

- $5\frac{1}{2}$ " for the VI 414/422, induction cooktop
- $3\frac{15}{16}$ " for the CI 282/CX 482 induction cooktop

* Does not apply to 36" CI 292/CX 492 induction cooktops
 ** Minimum $2\frac{9}{16}$ " for cooktops with frame (CI 292/CI 282) as well as VI 492 for surface-mounted installation and min. $2\frac{3}{4}$ " for CX 492 as well as for VI 492 for flush installation.

Combination with AL 400
 In addition to the measurements mentioned above, the following unobstructed cross sections must be planned between the cabinet and the AL 400 to allow for proper intake and exhaust air circulation for the induction cooktop.

A In front of the air duct
 $1\frac{3}{16}$ " distance between the back side of drawers, an oven or the cabinet's interior wall.

B Adjacent to the air duct
 The resulting gap between the air duct and the cabinet's side wall needs to remain open.

C At the housing's rear edge
 The resulting cross section between the housing and the wall, as well as between the housing and the floor, must remain open.

Combination with other appliances
 Installation above dishwasher is not permitted.

