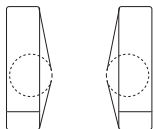


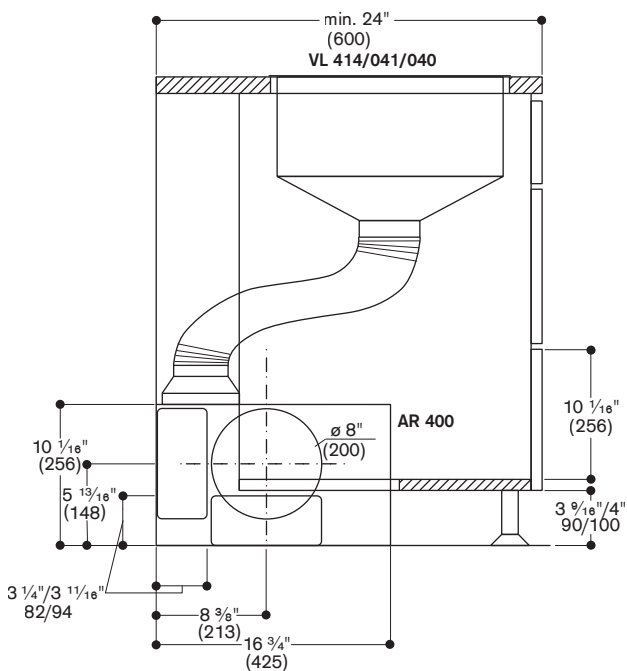
Please respect depth of cabinet body and protruding of the countertop for the required depth of the countertop.  
For required ducting, please visit your local hardware store.



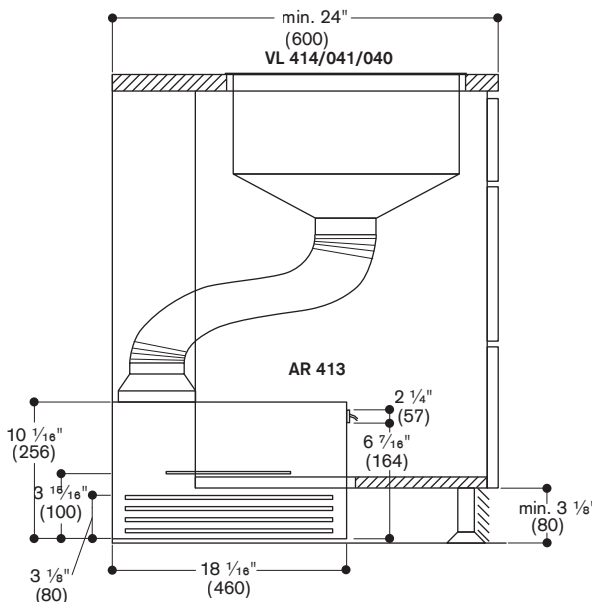
Connection of round ducting to the bottom side of VL with  $\varnothing$  5" flexible ducting.



**Connecting Vario 400/200 series VL downdraft to AR 400 inline blower using  $\varnothing$  5" flexible duct**



**Connecting Vario 400/200 series VL downdraft to AR 413 recirculation kit using  $\varnothing$  5" flexible duct**



Numbers indicated inside parenthesis ( ) = mm

Ventilation products that come without blowers have a motor connection cable that is used to connect the external Gaggenau blowers. The cable transports the actuation of the four power levels to its six wires.

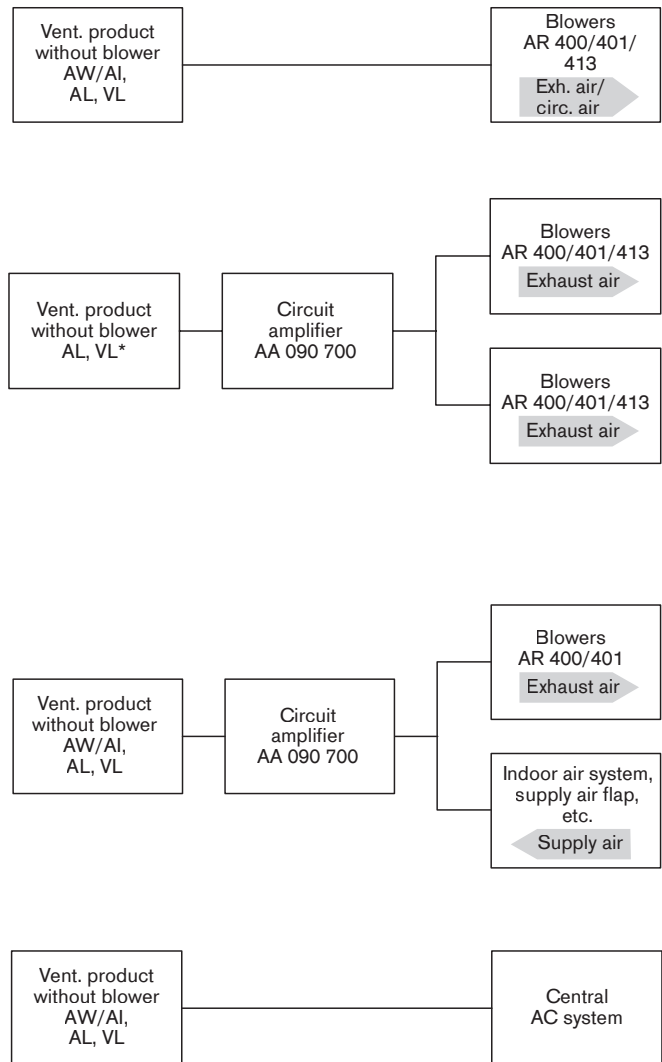
To connect two blowers, the control unit is split into two blower connection cables using the switching circuit amplifier. For the required double switching capacity, the switching amplifier has an additional connecting cable with Schuko plug.

#### Further control options

On request, there is an option to connect the signal of the motor connection cable to an existing on-site ventilation system so that this can respond accordingly to the activity of the Gaggenau ventilation system.

The relevant ventilation planner is then responsible for the effectiveness of the entire ventilation system.

The warranty for the electrical function remains valid for as long as its specifications are complied with.



- AW = AW/AI 402 wall/island hood
- AL = AL 400 retractable downdraft
- VL = Vario 400 VL 414 downdraft or Vario 200 VL 041/040 downdraft
- AR 400 = inline blower
- AR 401 = remote blower
- AR 413 = recirculation blower

\* When second blower is added to Vario 400 VL 414 downdraft, 1x AA 090 circuit amplifier and 1x AA 490 control knob is required to operate both blowers or 2x AA 490 control knobs to operate blowers independently by each of the knobs.