



#### AL 400 720

Stainless steel  
Width 46 5/8" (118 cm)  
Air extraction/recirculation with AR 400/401 blowers or AR 413 recirculation blower.  
Comes without blower.

#### AL 400 790

Stainless steel  
Width 36" (90 cm)  
Air extraction/recirculation with AR 400/401 blowers or AR 413 recirculation blower.  
Comes without blower.

#### Required installation accessories

##### AD 754 045

Connection piece to 2x 6" round ducts, either mounted on front or back of AL 400.

#### Installation accessories

##### AA 010 410

Air exhaust grill for recirculation mode  
Stainless steel colored, 36", including installation fittings, height adjustable.

##### AA 409 400

Furniture support 33 7/8" for 36" AL 400 downdraft.  
Recommended as bearer for the countertop, instead of a cabinet frame.

##### AA 409 430

Furniture support 4 9/16" for 46 5/8" AL 400 downdraft.  
Recommended as bearer for the countertop, instead of a cabinet frame.

##### ZB 020 090

Additional louvers for air exhaust grill AA 010 410. Extension piece 1 3/16", required for height adjustment. Order 1 for height adjustment of 1 1/4–2 3/8" (36–60 mm). Order 2 for height adjustment of 2 3/8–3 9/16" (61–90 mm).

#### Retractable downdraft ventilation AL 400

- Downdraft for combination with all Gaggenau cooktops, completely retractable when not in use
- Dimmable LED light for optimum illumination of the entire cooktop
- Precision-crafted 1/8-inch stainless steel frame
- For surface-mount installation with a visible edge or for flush installation
- Can be perfectly combined with other Vario 400 series cooktops

#### Output

For information on maximum air output in combination with blowers refer to the remote blower table on page 155.  
Noise level depends on the built-in situation.

#### Features

3 electronically controlled output levels.  
Intensive mode.  
Interval ventilation.  
Delayed shut-off.  
Grease filter saturation display.  
Cartridge-type filter, dishwasher-safe.  
Dimmable LED lighting.

#### Planning notes

46 5/8" AL 400 downdraft can be used with 4 Vario 200 series cooktops or 3 Vario 400 series cooktops.

36" AL 400 downdraft can be used with 3 Vario 200 series cooktops, 2 Vario 400 series cooktops or a cooktop configuration of up to 36" wide.

Can be combined with gas cooktops up to 60.000 BTU.  
In combination with the electric cooktop CE 490, installation in 24" deep countertops is possible.  
Operation of Vario cooktops is only possible without appliance cover.  
Installation is possible in countertops made of stone, synthetics or solid wood. Heat resistance and watertight sealing of the cut edges must be observed. Concerning other materials please consult the countertop manufacturer.

If the blower or recirculation blower is installed in the bottom cabinet and if combined with VK or VF ensure accessibility to the outlets.

The remaining countertop surface (min. 2") between the cut-out of the cooktop and the AL 400 downdraft must be reinforced with a support if less than 1 3/16" thick for surface-mount installation or less than 1 3/16". It is recommended to use furniture support AA 409 400/430.

If built-in situation permits, downdraft can be combined with ovens that do not exceed the maximum allowed cabinet temperature.  
Recommendation for stainless steel parts positioned nearby that have to be welded and polished: brushed grain 280.

Surfaces: Stainless steel 1.341, ground and brushed IIIC.

#### For air recirculation:

The exhaust outlet in the cabinet base should be as large as possible to minimize draughts.

The location of the exhaust outlet in the cabinet base is consumer-defined. Minimum cross-section 112 inches<sup>2</sup>.

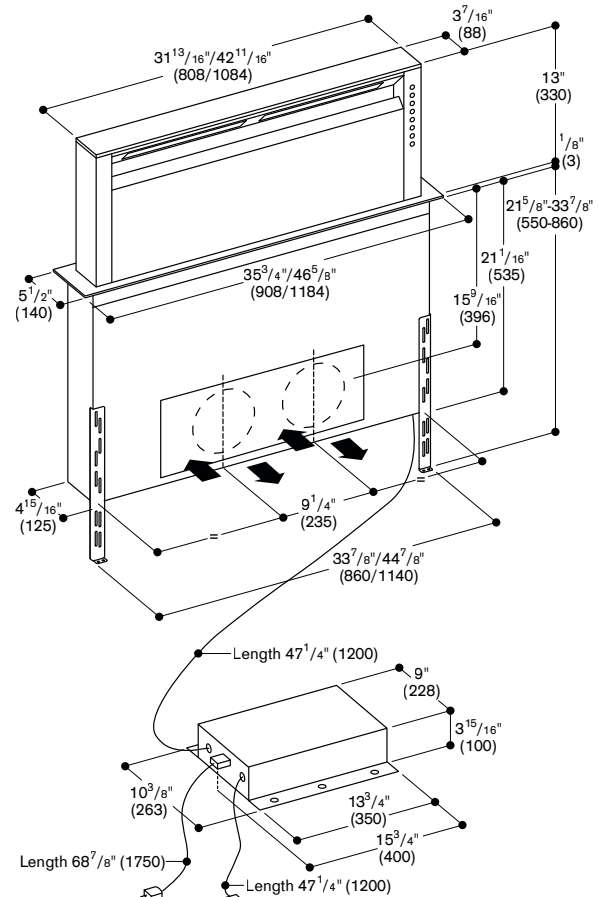
To avoid smoke when frying/grilling refer to the manuals of VR grill and VP teppan yaki.

#### For air extraction:

When installing in air extraction mode with a chimney-vented fireplace, a circuit breaker for the hood's power supply line is required.

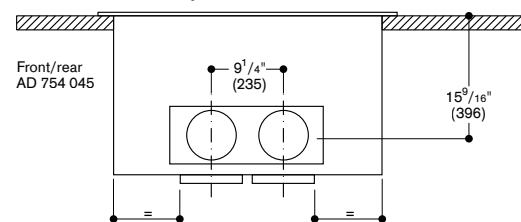
#### Rating

Total Amps: 10  
120V / 60 Hz  
Connecting cable 5.6' with plug.

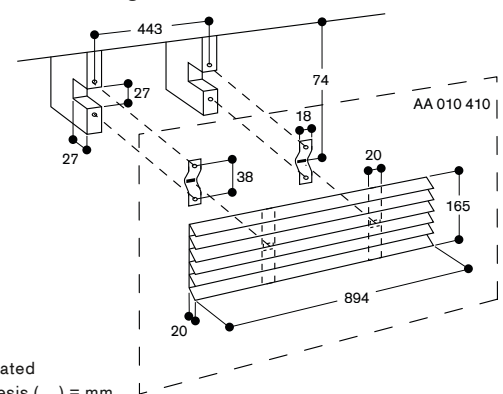


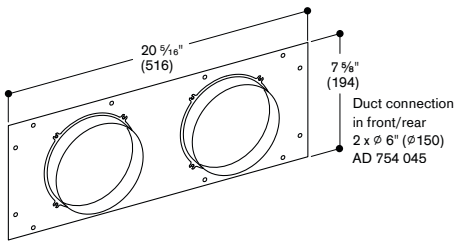
Duct connection 2 x Ø 6" front/back  
Round duct with AD 754 045

#### AL 400 connection positions Ø 6"

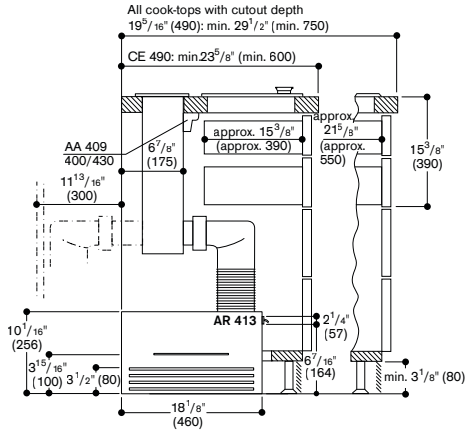


#### AA 010 410 air exhaust grill

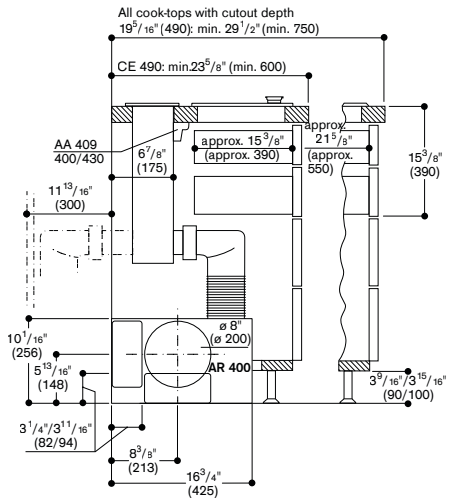




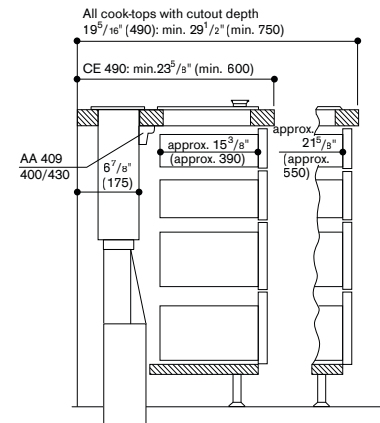
**Depth dimensions—base cabinet without back panel—  
recirculation operation for maximum output with 2x ø 6" round**



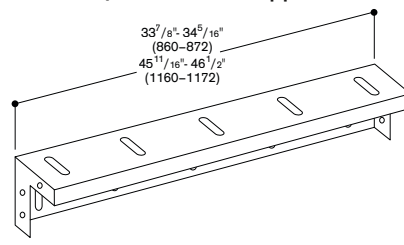
**Depth dimensions—base cabinet without back panel—  
air extraction operation for maximum output with 2x ø 6" round**



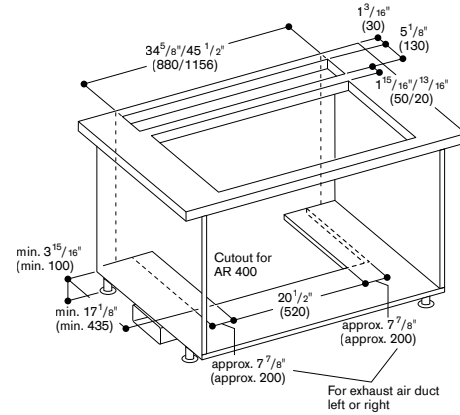
**Depth dimensions—base cabinet without back panel—  
air extraction operation with floor feed 2x ø 6" round**



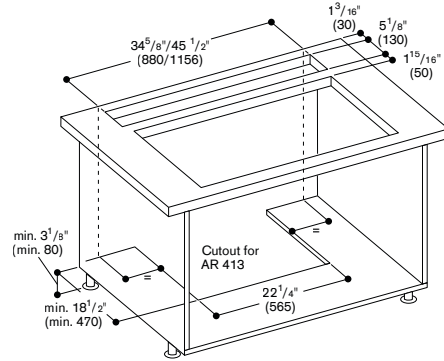
Numbers indicated inside parenthesis ( ) = mm



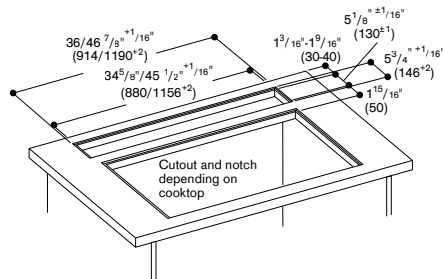
**Exhaust air: AL 400 with AR 400 in the lower cabinet**



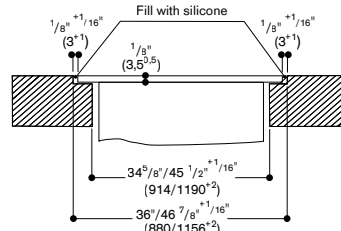
**Circulating air: AL 400 with AR 413 in the lower cabinet**



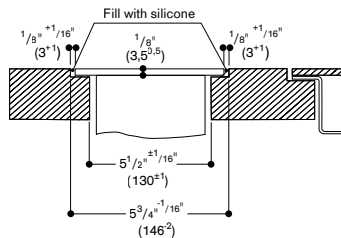
**AL 400 mounted flush**



**Longitudinal section**



**Cross-section**



**AL 400 cut-out is flush**

